



# The Fire Inventory from NCAR version 2.5: an updated global fire emissions model for climate and chemistry applications

Christine Wiedinmyer<sup>1</sup>, Yosuke Kimura<sup>2</sup>, Elena McDonald-Buller<sup>2</sup>, Louisa K. Emmons<sup>3</sup>, Rebecca R. Buchholz<sup>3</sup>, Wenfu Tang<sup>3</sup>, Keenan Seto<sup>1</sup>, Maxwell B. Joseph<sup>1,4</sup>, Kelley C. Barsanti<sup>5,3</sup>, Annmarie G. Carlton<sup>6</sup>, and Robert Yokelson<sup>7</sup>

<sup>1</sup>Cooperative Institute for Research in Environmental Sciences, University of Colorado Boulder, Boulder, CO, USA

<sup>2</sup>Center for Energy and Environmental Resources, The University of Texas at Austin, Austin, TX, USA

10 <sup>3</sup>Atmospheric Chemistry Observations and Modeling Laboratory, National Center for Atmospheric Research, Boulder, CO, USA

<sup>4</sup>Earth Lab, University of Colorado Boulder, Boulder, CO, USA

<sup>5</sup>Department of Chemical & Environmental Engineering, Center for Environmental Research & Technology, University of California Riverside, Riverside, CA, USA

15 <sup>6</sup>Department of Chemistry, University of California Irvine, Irvine, CA, USA

<sup>7</sup>Department of Chemistry, University of Montana, Missoula, MT, USA

*Correspondence to:* Christine Wiedinmyer (Christine.Wiedinmyer@colorado.edu)

**Abstract.** We present the Fire Inventory from NCAR version 2.5 (FINNv2.5), a fire emissions inventory  
20 that provides publicly available emissions of trace gases and aerosols for various applications, including  
use in global and regional atmospheric chemistry modeling. FINNv2.5 includes numerous updates to the  
FINN version 1 framework to better represent burned area, vegetation burned, and chemicals emitted.  
Major changes include the use of active fire detections from the Visible Infrared Imaging Radiometer  
Suite (VIIRS) at 375 m spatial resolution, which allows smaller fires to be included in the emissions  
25 processing. The calculation of burned area has been updated such that a more rigorous approach is used  
to aggregate fire detections, which better accounts for larger fires and enables using multiple satellite  
products simultaneously for emission estimates. Fuel characterization and emission factors have also been  
updated in FINNv2.5. Daily fire emissions for many trace gases and aerosols are determined for 2002-  
2019 (the Moderate Resolution Imaging Spectroradiometer (MODIS)-only fire detections) and 2012-  
30 2019 (MODIS+VIIRS fire detections). The non-methane organic gas emissions are allocated to the  
species of several commonly used chemical mechanisms. We compare FINNv2.5 emissions against other  
widely used fire emission inventories. The performance of FINNv2.5 emissions as inputs to a chemical



transport model is assessed with satellite observations. Uncertainties in the emission estimates remain, and recommendations for future evaluation and use are given.

## 35 1 Introduction

Open fires, such as wildfires, prescribed burns, agricultural fires, and land-clearing fires, are sources of atmospheric pollutants. Fire activity contributes to local, regional, and global emissions of greenhouse gases including carbon dioxide (CO<sub>2</sub>) and methane (CH<sub>4</sub>); reactive gases such as non-methane organic gases (NMOG), and nitrogen oxides (NO<sub>x</sub>) that form ozone; dioxins and other air toxics, and particulate matter (PM). Fire emissions and their transport change atmospheric composition to cause impacts at many scales with implications for air quality (e.g., Burke et al., 2021; Jaffe et al., 2020; Liu et al., 2017; Tang et al., 2022; Bourgeois et al., 2021; Xu et al., 2020, Xu et al. 2021), regional and global climate (e.g., Dintwe et al., 2017; Jin et al., 2012; Liu et al., 2019), visibility (e.g., Ford et al., 2018; Jaffe et al., 2020; Val Martin et al., 2015), and human health outcomes (e.g., Liu et al., 2017; Reid et al., 2016; Xu et al., 2020). Many factors contribute to the spatial and temporal patterns and severity of fires and their emissions including agricultural, forest, and waste management practices; land use change; climatic factors such as temperature, rainfall, and drought conditions; and ecosystem diversity and health (e.g., Armenteras et al., 2021; Kelly et al., 2020; Pausas and Keeley, 2021). Future climate, policy, and human development patterns, including in the wildland-urban interface (WUI), will have complex interactions on the effects of fires that may require adaptive strategies for communities (Schoennagel et al., 2017).

Accurate estimates of fire emissions are required to understand chemistry and climate, to assess ambient pollutant concentrations and population exposure, and to evaluate the effectiveness of emissions control programs for air quality planning and management. The Fire INventory from NCAR (FINN) (Wiedinmyer et al., 2011, <https://www2.acom.ucar.edu/modeling/finn-fire-inventory-ncar>) was developed more than 10 years ago to provide daily global estimates of pollutant emissions from open fires with a high spatial and temporal resolution for use in air quality, atmospheric composition, and climate modeling applications. The National Center for Atmospheric Research (NCAR) has served as the central repository for FINN global emissions files spanning 2002-2020: <http://bai.acom.ucar.edu/Data/fire/>. FINN estimates have been downloaded more than 13450 times since 2013-08-29, as of 26 October 2022, and the original model has been cited 908 times (Clarivate Web of Science). FINN emissions estimates



have been applied in regions of the world that experience high fire activity to evaluate the influences on air quality and public health (e.g., Crippa et al., 2016; Kulkarni et al., 2020; Nawaz and Henze, 2020; Nuryanto, 2015; Pimonsree and Vongruang, 2018; Takami et al., 2020); to assess emissions trends (e.g., Ma et al., 2018; Shen et al., 2019); to examine the effects of changing climate and development patterns  
 65 on wildfire emissions (e.g., Hurteau et al., 2014); and in comparisons with surface, aircraft and satellite-based observations (e.g., Reddington et al., 2019; Stavrakou et al., 2016), as well as with inventories developed using other fire emissions modeling systems (e.g., Bray et al., 2018; Faulstich et al., 2022; Kiely et al., 2019; Koplitz et al., 2018; Larkin et al., 2014; T. Liu et al., 2020; Pereira et al., 2016; Urbanski et al., 2018). Real-time emissions estimates from FINN version 1 (FINNv1) are currently used in the  
 70 NCAR Whole Atmosphere Community Climate Model (WACCM) chemistry and aerosol forecasts (<http://www.acom.ucar.edu/waccm/forecast/>).

The FINNv1 model is based on a bottom-up approach to estimate emissions described by Wiedinmyer et al., (2011). In FINNv1, global observations from the Moderate Resolution Imaging Spectroradiometer (MODIS) sensors onboard the National Aeronautics and Space Administration's (NASA's) Terra and  
 75 Aqua satellites are used to detect fire activity, beginning with the MODIS Rapid Response (MRR) system or the MODIS Data Processing System (MODAPS) Collection 5 (NASA/University of Maryland, 2002; Davies et al., 2009). Fuel characterization in FINNv1 is based on the Collection 5 MODIS Land Cover Type (LCT) product for 2005 (Friedl et al., 2010) with land cover classifications defined by the International Geosphere-Biosphere Programme (IGBP) and Collection 3 MODIS Vegetation Continuous  
 80 Fields (VCF) product for 2001 (Carroll et al., 2011; Hansen et al., 2003; Hansen et al., 2005). Fuel loadings are assigned from Hoelzemann (2004) or Akagi et al. (2011). Estimates of fuel burned use the approach of Ito and Penner (2004). Emission factors by land cover classification for trace gases and particulate air pollutants in FINNv1 are based on published literature at the time (Akagi et al., 2011; Andreae and Merlet, 2001; Andreae and Rosenfeld, 2008; McMeeking, 2008).

85 FINN version 2.5 (FINNv2.5) has extensive updates to the input data and processing used for the detection of fire activity, characterization of annual land use/land cover and vegetation density, determination of area burned, and the application of fuel loadings by global region compared to the FINNv1 configuration. FINNv2.5 also includes revisions to emission factors based on current literature. Here we describe the development of FINNv2.5, released in 2022 (Wiedinmyer and Emmons, 2022). Global emissions for  
 90 2002 through 2021 have been created and are online for public use, for inclusion in emissions inventories



and chemical and climate modeling applications, and for comparisons with previous versions of FINN and results from other fire emissions models.

## 2 Methods

FINNv2.5 uses the same FINNv1 bottom-up methodology (Seiler and Crutzen, 1980; Wiedinmyer et al., 2011) as defined by the overall equation:

$$E_i = A(x,t) \times B(x) \times FB \times EF_i \quad (1)$$

where the emissions ( $E$ , mass of pollutant  $i$ ) is the product of the area burned at location  $x$  and time  $t$  [ $A(x,t)$ ], the biomass at location  $x$  [ $B(x)$ ], the fraction of biomass that is burned ( $FB$ ), and an emission factor ( $EF_i$ , mass of pollutant  $i$  per biomass burned).

100 The FINNv2.5 model framework has three components: (1) burned area and land cover determination (Sections 2.1-2.3), (2) fuel consumption and emission calculation (Section 2.4), and (3) speciation of the non-methane organic gases (NMOG) (Section 2.5).

### 2.1 Fire location and timing

FINNv2.5 first determines burned area from daily satellite detections of active fires. FINNv2.5 uses  
 105 MODIS detections (nominal 1 km<sup>2</sup> resolution) (Giglio et al., 2006), as in FINNv1, and adds the option to use active fire detections at 375 m resolution from the Visible Infrared Imaging Radiometer Suite (VIIRS; Csiszar et al., 2014), onboard the Suomi National Polar-orbiting Partnership (Suomi-NPP) satellite, alone or in combination with MODIS active fire data. The use of VIIRS 375m detections is a major advancement from the use of MODIS-only fire detections, as this product better captures small fires.  
 110 VIIRS detections are available from 2012 to the current year.

The MODIS Collection 6 (MCD14DL) and VIIRS active fire products are obtained from NASA's Fire Information for Resource Management System (FIRMS) data portal: <https://firms.modaps.eosdis.nasa.gov/download/>. The MODIS product provides the location, overpass time (Coordinated Universal Time, UTC), and confidence of daily fire detections. Data confidence in the



115 MODIS product is specified by a numeric scale of 0 to 100%. Detections with a confidence specification of less than 20% are eliminated from our calculation in FINNv2.5, as was done in earlier FINN versions. Daily global coverage is not accomplished at latitudes between approximately 23.5° N and 23.5°S due to the observational swath width. To account for the lack of daily observations, fire detections only in these equatorial regions are counted for a two-day period: each fire is assumed to continue into the next day.

120 With its improved spatial resolution of 375m, the VIIRS product provides more sensitive detection of fires of relatively small areas, fully global coverage, improved mapping of large fire perimeters, and improved nighttime performance relative to MODIS fire detections (Schroeder et al., 2014). The higher detection rates of small fires are particularly important for areas of the world where agriculture burning is common such as in southeast Asia and southeast U.S. Detection confidence is provided by the VIIRS

125 product and is specified by three categories, low/nominal/high. In the FINNv2.5 preprocessor, detections with a confidence specification identified as “low” are eliminated from the analysis. We only include data attributed to thermal anomalies from vegetation fires (Type=0), i.e., other thermal anomaly types associated with active volcanos or other static land sources are filtered from the product.

The processing of the two simultaneous fire products in FINNv2.5 does not lead to double counting fires:

130 the FINNv2.5 method determines the spatial union of all adjacent detections for a given day as the daily burned area of a fire, as described below in Section 2.2. The identity of the sensor is not relevant for the



determination of burned area, as long as the pixel size for each detection is correctly represented (i.e., 0.14 km<sup>2</sup> for VIIRS and 1 km<sup>2</sup> for MODIS).

The active fire products report the time of acquisition in Coordinated Universal Time (UTC). In contrast to previous versions of the model, the FINNv2.5 preprocessor uses local time in the specification of the date of a fire detection in order to facilitate comparisons of emissions estimates with observational data:

$$\text{Local Time} = \text{UTC} + \text{Nearest\_Integer}(\text{Longitude}/15) \quad (2)$$

## 2.2 Burned area

FINNv1 estimates burned area for each fire pixel identified individually, and the nominal pixel size for the MODIS fire detections, 1 km<sup>2</sup>, is assumed per detection. Spatially overlapping detections are eliminated from further analysis. It was recognized that for large fires in forested regions, an array of multiple discrete detections is typically reported, and an estimate of a contiguous area that represents the total area burned by a fire is needed. We improved the burned area estimate in FINNv2 to better represent the area associated with each fire.

A fire event in the western United States is shown in Figure 1a to illustrate the new approach for estimating area burned. For FINNv2.5, each reported active fire detection (Figure 1b) is assigned a square area of 0.14 km<sup>2</sup> from VIIRS or 1 km<sup>2</sup> from MODIS (Figure 1c) based on the nominal horizontal resolution of the data (“instrument resolution square”). Detections determined to be in proximity with one another are aggregated by two different approaches, depending on the land cover type and forest cover. Initially, it is assumed that multiple detections by adjacent pixels in a satellite sensor array are part of a larger fire, and these detections are merged. The scan and track sizes of the satellite pixel are provided by the fire detection product and define the actual resolution of the fire detection. The scan and track sizes for each fire detection are used for identifying groups of records that represent contiguous or overlapping detections. A rectangle with easterly and northerly sizes equal to 110% of the scan and track sizes is established for each detection (“detection rectangle”) (Figure 1d), with the objective of identifying adjacent neighboring detections, but not for direct application to the burned area estimation. Fire detections are identified as being from one larger fire when any of the satellite detection rectangles

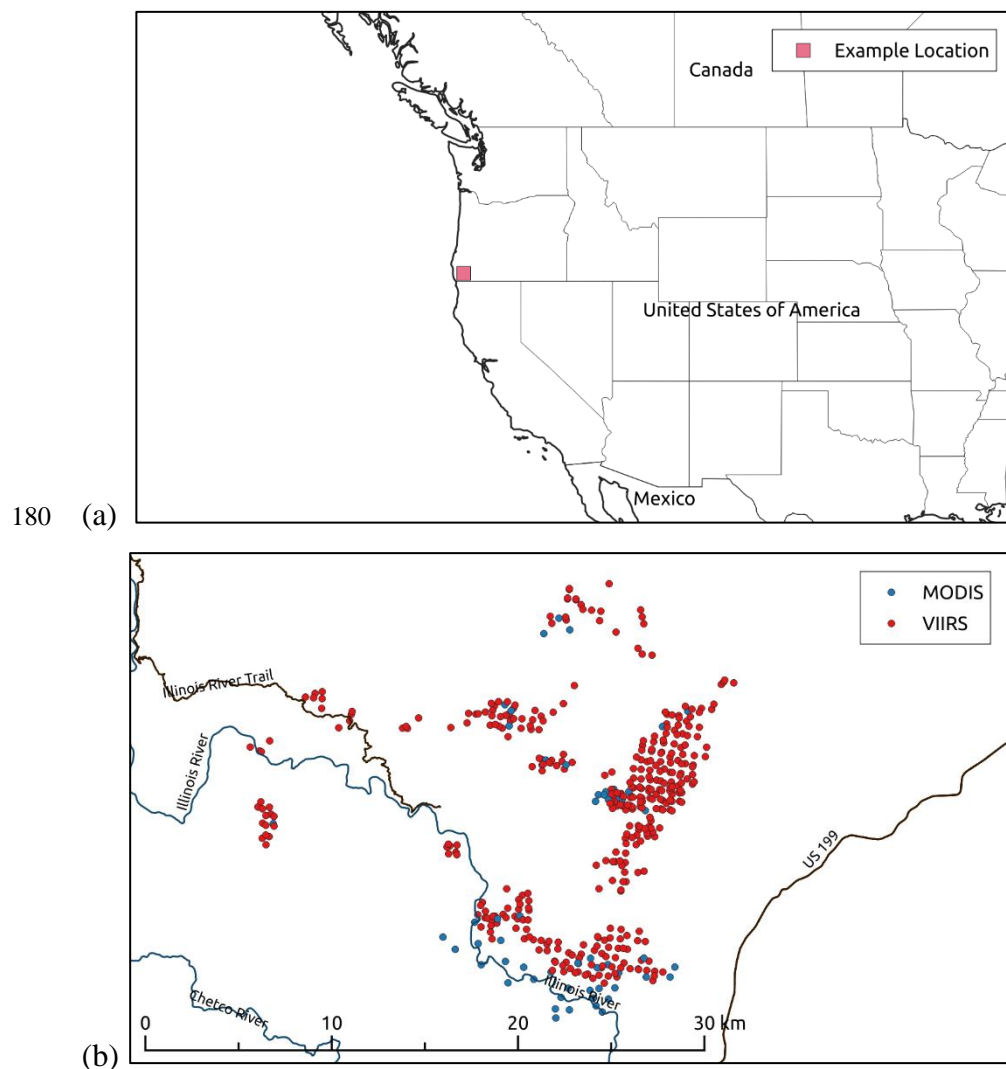


overlap. To minimize an overestimation of burned area, a convex hull is generated between corresponding pairs of detection rectangles that directly intersect. The union of pairwise convex hulls from a cluster forms an “extended fire polygon” that represents the tentative estimated burned area for a single fire event or group of nearby fires for the day (Figure 1d). This approach effectively fills any gap between instrument resolution squares.

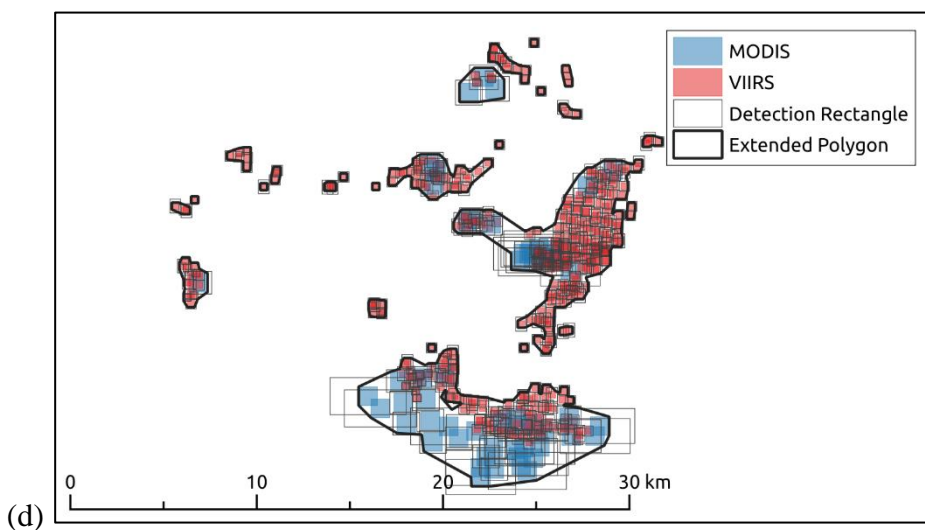
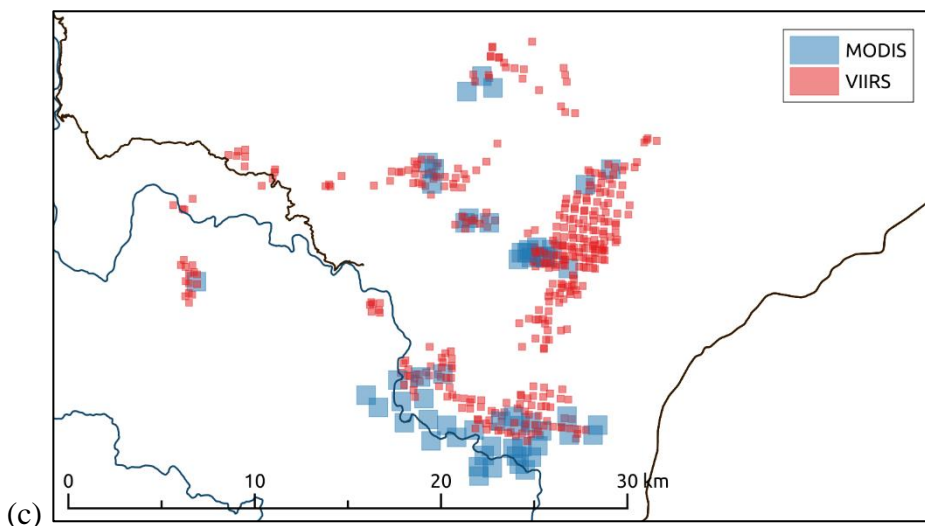
For each of the extended polygons, the MOD44B v006 MODIS/Terra VCF annual product (<https://lpdaac.usgs.gov/products/mod44bv006/>) is overlaid (Section 2.3), and average tree cover fraction is determined (Figure 1e). For forested areas with tree cover  $\geq 50\%$  as determined by the VCF product, the merged polygons are accepted as the final burned area estimate. Otherwise, the merging is not used, and instead an alternative, more conservative approach is applied to determine the burned area for the region. This alternative approach is used to prevent overestimation of emissions in regions with many small fires, as in the savanna fires in sub-Saharan Africa. The alternative polygon aggregation is achieved by aggregating nearby detections only when the instrument pixels themselves are intersecting (Figure 1c) and therefore not with the extended detection footprints (Figure 1d). The result is an aggregation algorithm that is repeated with a smaller set of detections to determine the alternative conservative set of polygons (“conservative fire polygon”). The “final burned area polygons” in Figure 1f show examples of a composite of polygons based on these two different aggregation approaches. Note at the bottom of Figure 1f, a region with less than 50% tree cover has a smaller final burned area polygon estimate than the extended polygon (blue). In contrast, the polygon in the center of Figure 1f, which is a forested area

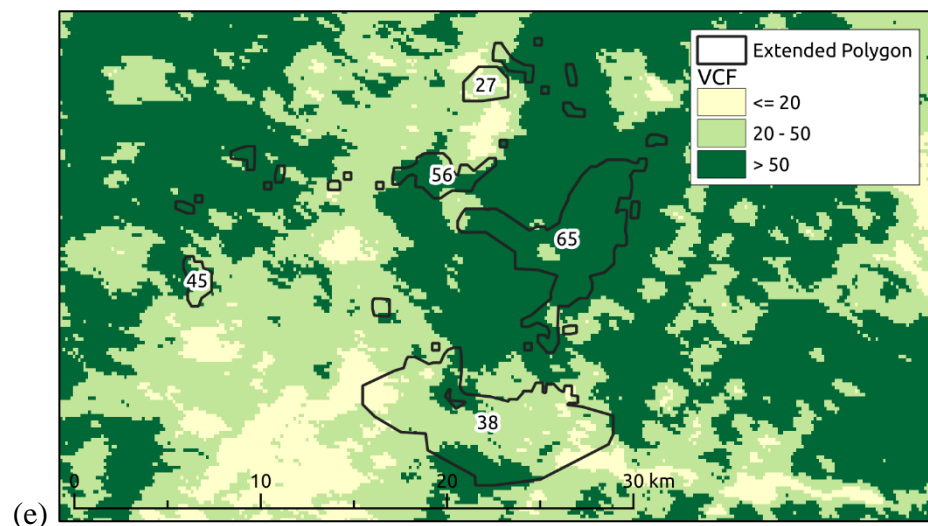


with more than 50% tree cover uses the extended polygon determined in Figure 1d. (Further information about this aggregation is in Section S1 of the Supporting Information).

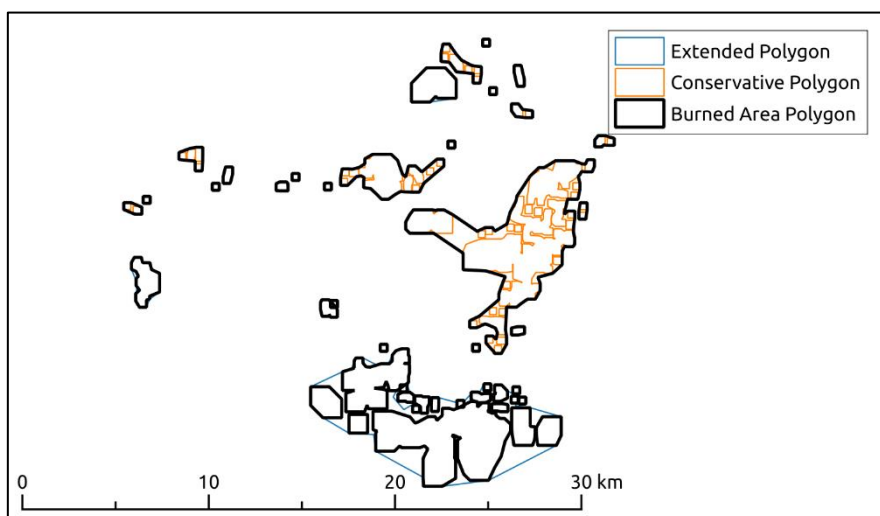








185 (f)



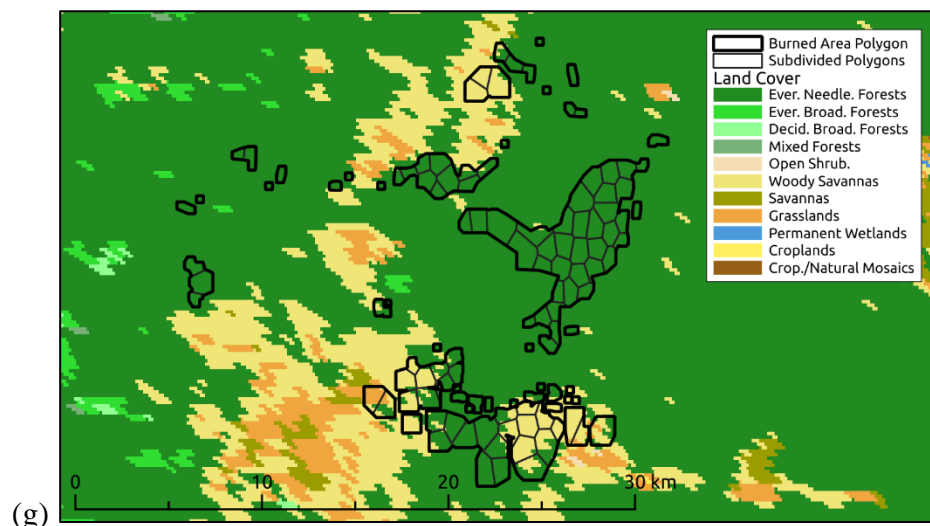


Figure 1. Illustration of the burned area determination used in the FINNv2.5 preprocessor: (a) example fire location; (b) active fire detections; (c) burned area per detection based on instrument resolution; (d) detection clusters joined for determination of extended burned area; (e) determination of average tree cover for merged polygons; (f) final burned area polygons reflecting either extended or conservative polygons based on percent tree cover; (g) subdivision of burned area polygons to develop emissions estimates by land cover classification.

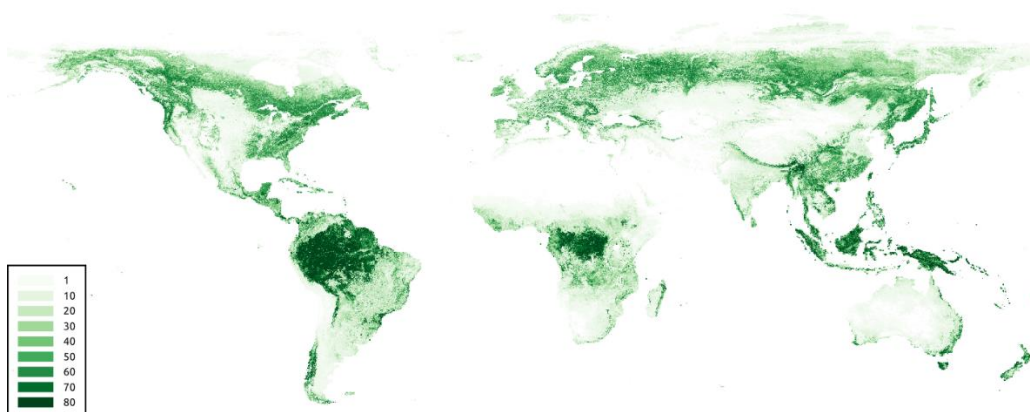
Subsequently, the final burned area polygons are subdivided using a Voronoi tessellation algorithm in order to develop emissions estimates by land cover classification as described in Sections 2.3 and 2.4. Each of the undivided, final burned area polygons are assigned a unique fire id to facilitate users to group emission estimates from a presumed single fire event.

## 2.3 Fuel loading and vegetation inputs

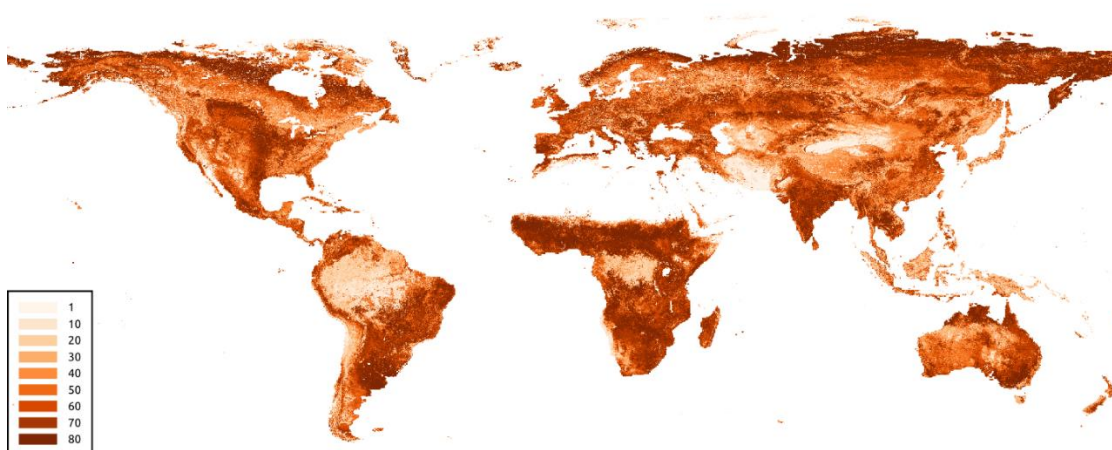
The NASA MODIS VCF product provides estimates of the percentage of bare surface, herbaceous, and forested cover at a horizontal resolution of 250m (Figure 2). For each fire area, the subdivided polygons described in Section 2.2 (Figure 1g) are overlaid on the vegetation cover data from MOD44B v006 MODIS/Terra VCF annual product (<https://lpdaac.usgs.gov/products/mod44bv006/>) (Figure 1e). The VCF data for the prior year are chosen, so that the VCF before any land cover changes due to fire are used in the emission estimation process. The VCF raster is clipped to the geometry of the fire polygon, and the averages of the VCF tree, herbaceous and bare cover are calculated for each fire polygon.



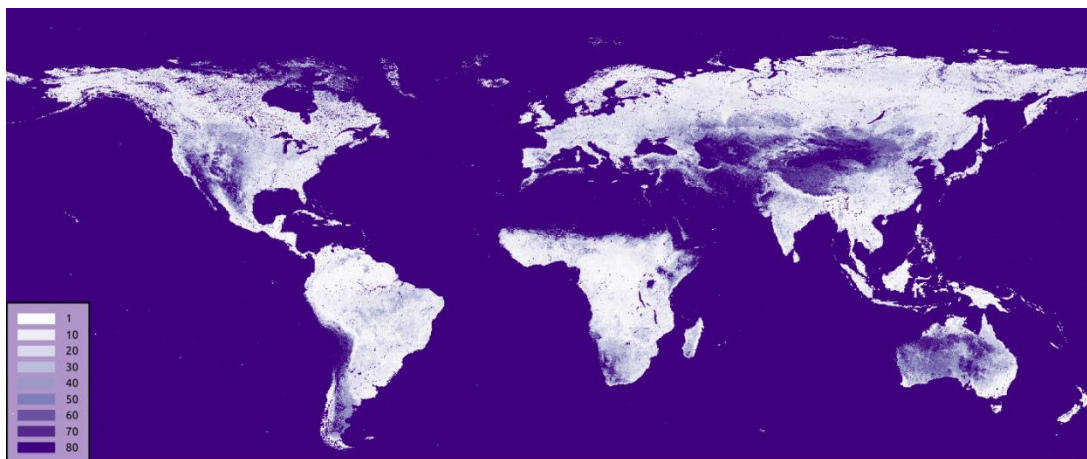
205 (a)



(b)



210 (c)

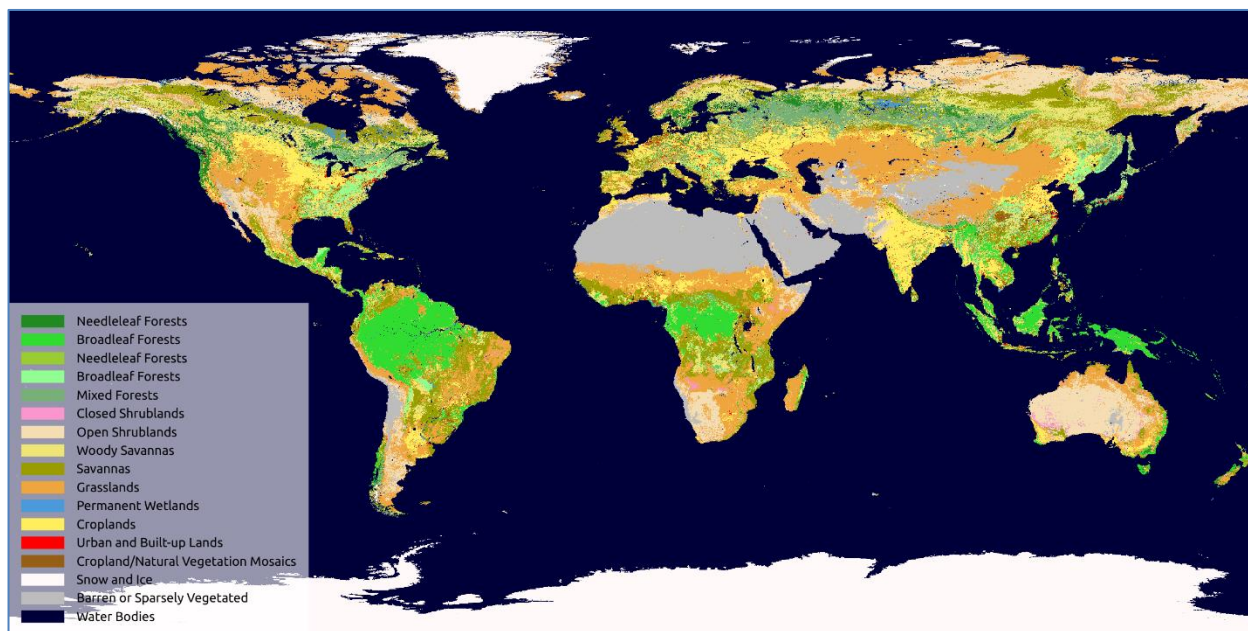


**Figure 2. MODIS44B v006 MODIS/Terra VCF product for 2020: (a) percent tree cover; (b) percent herbaceous cover, and (c) percent bare cover.**

FINNv2.5 uses the Terra and Aqua combined MODIS LCT MCD12Q1 Version 6 data product with the International Geosphere-Biosphere Programme (IGBP) classification scheme (<https://lpdaac.usgs.gov/products/mcd12q1v006/>) as its default land cover information. Figure 3 shows the global distribution of land cover applied as the default in FINNv2.5. Each subdivided polygon (for example, in Figure 1g) is assigned fractional coverage of one of 16 land cover classifications (Table 1). Similar to the application of the VCF information, land use data from the previous year are used.

Use of the LCT and VCF products in FINNv2.5 is an improvement from FINNv1. FINNv1 used one static map of LCT and VCF (from 2002) for any year processed. FINNv2.5 employs year-specific MODIS LCT and VCF maps that change annually. Further, the specific vegetation assignments for each subdivided polygon enables different vegetation types and coverage to be represented across larger fires. These input data and processes enable better representation of the vegetation that is burned.

All fire polygons are assigned to one of 13 global regions (Wiedinmyer et al. 2011) used to assign fuel loadings (Section 2.4). This completes the first component of the FINNv2.5 modeling framework and results in a file of daily burned areas and associated land cover information.



230 **Figure 3: MCD12Q1 Version 6 data product with the International Geosphere-Biosphere Programme (IGBP) classification scheme.**

## 2.4 Emissions Calculations

The next step of the model framework is the emissions calculation. In this step, the daily burned area and associated vegetation information (described above) are assigned associated fuel loadings. Using the same process described by Wiedinmyer et al. (2011), the fraction burned (FB) is assigned as a function of tree and herbaceous cover, emission factors (EF) are determined based on land cover, and daily pollutant emissions estimates are calculated. Overall, the emission calculation process follows the framework described by Wiedinmyer et al. (2011), with the following exceptions.

235

Similar to earlier FINN versions (Wiedinmyer et al., 2011), the 16 IGBP land cover classifications of the LCT product are mapped to consolidated vegetation types, depending on the land cover class and latitude that distinguish tropical, temperate and boreal forests (Table 1). The consolidated vegetation types used in FINNv2.5 are grassland and savanna, woody savanna or shrubs, tropical forest, temperate forest, boreal forest, temperate evergreen forest, and crops.

240





245 **Table 1. LCT IGBP and generic vegetation type descriptions.**

IGBP LCT Description	LCT Value	Generic Vegetation Type	Genveg Value
Evergreen Needleleaf Forests	1	if latitude > 50, then Boreal Forest; else Temperate Evergreen Forest	5,6
Evergreen Broadleaf Forests	2	if latitude > -23.5 and < 23.5, then Tropical Forest; else Temperate Forest	3, 4
Deciduous Needleleaf Forests	3	if latitude > 50, then Boreal Forest; else Temperate Forest	5,4
Deciduous Broadleaf Forests	4	Temperate Forest	4
Mixed Forests	5	If latitude > 5, then Boreal Forest; if latitude > -23.5 and < 23.5 then Tropical Forest; else Temperate Forest	5, 3, 4
Closed Shrublands	6	Woody Savanna or Shrubs	2
Open Shrublands	7	Woody Savanna or Shrubs	2
Woody Savannas	8	Woody Savanna or Shrubs	2
Savannas	9	Grassland and Savanna	1
Grasslands	10	Grassland and Savanna	1
Permanent Wetlands	11	Grassland and Savanna	1
Croplands	12	Croplands	9
Urban and Built-up Lands	13	If Treecover < 40, then reassign to 10; If Treecover > 40 and < 60, then reassign to 8; If tree > 60 then assign based on latitude	**
Cropland/Natural Vegetation Mosaics	14	Grassland and Savanna	1
Permanent Snow and Ice	15	Remove	
Barren	16	Grassland and Savanna	1
Water Bodies	17	Remove	
Unclassified	255	Remove	

\*\* if latitude > 50, then Boreal Forest; if latitude > -30 and < 30, then Tropical Forest; Else, Temperate Forest



The fuel loading, or the potential maximum amount of biomass available to be burned [ $B(x)$  in equation 1], is assigned by generic vegetation type and global region (Table 2). Selected values were updated for FINNv2.5 based on van Leeuwen et al. (2014). The fuel loading for crops was updated to  $902 \text{ g m}^{-2}$  based on an average from (Akagi et al., 2011; van Leeuwen et al., 2014; Pouliot et al., 2017). Specific crop types are not identified in the version described here.





255 **Table 2. Fuel loadings ( $\text{g m}^{-2}$ ) assigned by generic land cover type and global region. These values are as described by Wiedinmyer et al. (2011) unless noted otherwise. Highlighted values indicate those updated for FINNv.2.5 based on van Leeuwen et al. (2014).**

<b>Global Region</b>	<b>Tropical Forest</b>	<b>Temperate Forest</b>	<b>Boreal Forest</b>	<b>Woody Savanna/ Shrublands</b>	<b>Savanna and Grasslands<sup>g</sup></b>
North America	28,076	10,661 <sup>e</sup>	17,875 <sup>e</sup>	4,762	976
Central America	26,500 <sup>e</sup>	11,000		2,224	418
South America	26,755 <sup>e</sup>	7,400		3,077	624 <sup>e</sup>
Northern Africa	25,366	3,497		2,501	382 <sup>e</sup>
Southern Africa	25,295	6,100		2,483	411 <sup>e</sup>
Western Europe	28,076	7,120	6,228	4,523	1,321
Eastern Europe	28,076	11,386	8,146	7,752	1,612
North Central Asia	6,181	20,807	14,925 <sup>e</sup>	11,009	2,170
Near East	6,181	10,316		2,946	655
East Asia	14,941 <sup>e</sup>	7,865		4,292	722
Southern Asia	26,546 <sup>e</sup>	14,629		5,028	1,445
Oceania	16,376	13,535 <sup>e</sup>		2,483 <sup>f</sup>	552 <sup>e</sup>

<sup>a</sup> Akagi et al. (2011) and references therein; <sup>b</sup> tropical forest class added for North America and Europe (in LCT); <sup>c</sup> all Asia assigned equal tropical forest values; <sup>d</sup> taken as the average of tropical and temperate forest fuel loadings for Oceania; <sup>e</sup> (van Leeuwen et al., 2014); <sup>f</sup> taken as the same for African woody savanna from van Leeuwen et al., 2014; <sup>g</sup> croplands assigned same fuel loading as grasslands.



260 For North America, FINNv2.5 utilizes the fuel loadings for coarse/woody and herbaceous vegetation by land cover type derived from the Fuel Characteristic Classification System (FCCS) of the U.S. Department of Agriculture Forest Service (<https://www.fs.fed.us/pnw/fera/fccs/>), as described by McDonald-Buller et al. (2015). These fuel loadings (Table 3) have priority over the regional default fuel loadings (Table 2).

265 **Table 3. North American fuel loadings ( $\text{g m}^{-2}$ ) by land cover type for coarse/woody and herbaceous vegetation. These values are based on the Fuel Characteristic Classification System (<https://www.fs.fed.us/pnw/fera/fccs/>) with the exception of croplands<sup>a</sup>.**

Land Cover Type	Fuel Loading ( $\text{g m}^{-2}$ )	
	Coarse/Woody	Herbaceous
Water	0	0
Evergreen Needleleaf Forest	28,930	437
Evergreen Broadleaf Forest	19,917	650
Deciduous Needleleaf Forest	15,653	541
Deciduous Broadleaf Forest	19,982	964
Mixed Forests	20,339	766
Closed Shrublands	5,136	229
Open Shrublands	2,889	169
Woody Savannas	12,907	668
Savannas	10,907	764
Grasslands	2,822	407
Permanent Wetlands	8,509	712
Croplands	0	902 <sup>a</sup>
Urban and Built-Up	0	0
Cropland/Natural Vegetation	9,080	822
Snow and Ice	0	0
Barren or Sparsely Vegetated	1,355	104



<sup>a</sup>Taken as an average from van Leeuwen et al. (2014), Akagi et al., (2011), and McCarty et al. (2012).

Emission factors are assigned based on the generic vegetation type. Since the original release of FINNv1 in 2011, there have been many studies to measure emission factors from wildland fires. We have updated  
270 the emission factors from FINNv1.5 with results from recent publications (Table 4).



**Table 4: Emission factors ( $\text{g kg}^{-1}$ ) for FINNv2.5.**

Chemical Species	Generic Vegetation Index and Type						
	1	2	3	4	5	6	9
	Savanna Grasslands <sup>1</sup>	Woody Savanna/ Shrubs	Tropical Forest	Temperate Forest <sup>2</sup>	Boreal <sup>3</sup>	Temperate Evergreen Forest <sup>2</sup>	Crops <sup>4</sup>
Carbon Dioxide (CO <sub>2</sub> )	1686	1681	1643	1510	1565	1623	1444
Carbon Monoxide (CO)	63	67	93	122	111	112	91
Methane (CH <sub>4</sub> )	2	3	5.1	5.61	6	3.4	5.82
Non-methane Organic Gases (NMOG) <sup>5</sup>	28.2	24.8	51.9	56	48.5	49.3	51.4
Hydrogen (H <sub>2</sub> )	1.7	0.97	3.4	2.03	2.3	2	2.59
Nitrogen Oxides (NO <sub>x</sub> as NO)	3.9	3.65	2.6	1.04	0.95	1.96	2.43
Sulfur Dioxide (SO <sub>2</sub> )	0.9	0.68	0.4	1.1	1	1.1	0.4
Particulate Matter with Diameters less than 2.5 $\mu\text{m}$ (PM <sub>2.5</sub> )	7.17	7.1	9.9	15	18.4	17.9	6.43
Total Particulate Matter (TPM)	8.3	15.4	18.5	18	18.4	18	13
Total Particulate Carbon (TPC)	3	7.1	5.2	9.7	8.3	9.7	4
Particulate Organic Carbon (OC)	2.6	3.7	4.7	7.6	7.8	7.6	2.66
Particulate Black Carbon (BC)	0.37	1.31	0.52	0.56	0.2	0.56	0.51
Ammonia (NH <sub>3</sub> )	0.56	1.2	1.3	2.47	1.8	1.17	2.12
Nitrogen Oxide (NO)	2.16	0.77	0.9	0.95	0.83	0.95	1.18
Nitrogen Dioxide (NO <sub>2</sub> )	3.22	2.58	3.6	2.34	0.63	2.34	2.99
Non-methane Hydrocarbons (NMHC)	3.4	3.4	1.7	5.7	5.7	5.7	7
Particulate Matter with Diameters less than 10 $\mu\text{m}$ (PM <sub>10</sub> )	7.2	11.4	18.5	16.97	18.4	18.4	7.02



<sup>1</sup>Emission factors for Tropical Forests, Savannah/Grasslands, Woody Savannah/Shrubs updated to average values from Akagi et al. (2011) (updated Feb. 2015). <sup>2</sup>Emission factors for Temperate Forest and Temperate Evergreen Forests are average values  
275 from Akagi et al. (2011) (updated Feb 2015) and results from X. Liu et al. (2017), Paton-Walsh et al. (2014), and Urbanski  
(2014). For Temperate Evergreen Forest, only results from evergreen forests included. <sup>3</sup>Boreal Forest emission factors are  
average of Akagi et al. (2011) with emission factors from boreal forest emission factors from Urbanski et al. (2014). <sup>4</sup>Crop  
emission factors updated with average values from Akagi et al (2011) and results from Fang et al. (2017), X. Liu et al. (2016),  
Santiago-De La Rosa et al. (2018), and Stockwell et al. (2015) Table S3). <sup>5</sup>NMOG emission factors now include identified and  
280 unidentified compounds.

## 2.5 Allocation of Non-Methane Organic Gases to Chemical Mechanisms

Wiedinmyer et al (2011) provided mappings from the total mass NMOG emission values calculated by the FINN model to the surrogate species of three chemical mechanisms commonly used in chemical transport models: MOZART, SAPRC99, and GEOS-Chem. The mapping of NMOG emissions to the MOZART T1 chemical mechanism was created for FINNv2.5 based on recent published emissions data and updates in the chemical mechanisms (Table 5). To apply, the total NMOG mass estimated by FINN should be multiplied by the mapping value (mole species kg NMOG<sup>-1</sup>, e.g., Table 5) to assign the molar emission of the surrogate species. The mappings to the SAPRC99 and GEOS-chem have not been updated and are the same as described by (Wiedinmyer et al., 2011).

**Table 5: Factors to map the total NMOG mass emissions to the MOZART-T1 chemical species (mole-species kgNMOG<sup>-1</sup>).**

MOZART T1 Chemical Species	Generic Vegetation Index and Type						
	1	2	3	4	5	6	9
	Savanna Grasslands	Woody Savanna/ Shrubland	Tropical Forest	Temperate Forest	Boreal Forest	Temperate Evergreen Forest	Crop
APIN	0.009	0.053	0.0	0.261	0.259	0.261	0.010
BENZENE	0.144	0.442	0.0	0.253	0.290	0.253	0.091
BIGALK	0.156	0.644	0.219	0.415	1.821	0.415	0.246
BIGENE	1.467	1.274	0.662	1.393	0.627	1.393	0.674
BPIN	0.0	0.004	0.0	0.008	0.209	0.008	0.0
BZALD	0.791	0.272	0.120	0.298	0.166	0.298	0.325
C2H2	2.103	1.975	0.672	2.513	1.167	2.513	1.701
C2H4	1.218	2.886	1.505	1.930	1.407	1.930	1.412
C2H6	0.859	0.641	0.939	0.611	1.168	0.611	0.673
C3H6	0.647	0.557	0.603	0.487	0.499	0.487	0.457
C3H8	0.090	0.561	0.114	0.149	0.194	0.149	0.142
CH2O	1.532	2.285	2.299	2.181	1.361	2.181	1.716
CH3CH2OH	0.0	0.055	0.0	0.066	0.023	0.066	0.0
CH3CHO	1.037	0.792	1.404	0.758	0.416	0.758	0.929
CH3CN	0.117	0.130	0.399	0.088	0.176	0.088	0.142
CH3COCH3	0.201	0.242	0.433	0.297	0.242	0.297	0.162
CH3COOH	2.371	1.353	2.029	1.292	1.360	1.292	2.349
CH3OH	1.451	1.650	3.031	1.744	1.608	1.744	2.328



CRESOL	0.059	0.058	0.0	0.059	0.040	0.059	0.074
GLYALD	0.390	0.128	1.886	0.210	0.233	0.210	0.800
HCN	0.559	0.927	0.625	0.684	0.846	0.684	0.416
HCOOH	0.206	0.134	0.683	0.259	0.254	0.259	0.426
HONO	0.298	0.643	1.001	0.326	0.228	0.326	0.187
HYAC	0.309	0.118	0.609	0.223	0.149	0.223	1.548
ISOP	0.069	0.138	0.029	0.129	0.085	0.129	0.062
LIMON	0.0	0.013	0.0	0.158	0.0	0.158	0.0
MACR	0.0	0.147	0.222	0.113	0.024	0.113	0.0
MEK	0.370	0.286	0.666	0.274	0.104	0.274	0.387
MGLY	0.347	0.094	0.0	0.135	0.090	0.135	0.171
MVK	0.317	0.301	0.222	0.247	0.087	0.247	0.193
MYRC	0.0	0.003	0.0	0.002	0.0	0.002	0.0
PHENOL	0.472	0.457	0.191	0.345	0.517	0.345	0.408
TOLUENE	0.457	0.531	0.769	0.605	1.327	0.605	0.375
XYLENE	0.385	0.355	0.040	0.422	0.238	0.422	0.295
XYLOL	0.108	0.046	0.0	0.088	0.056	0.088	0.130

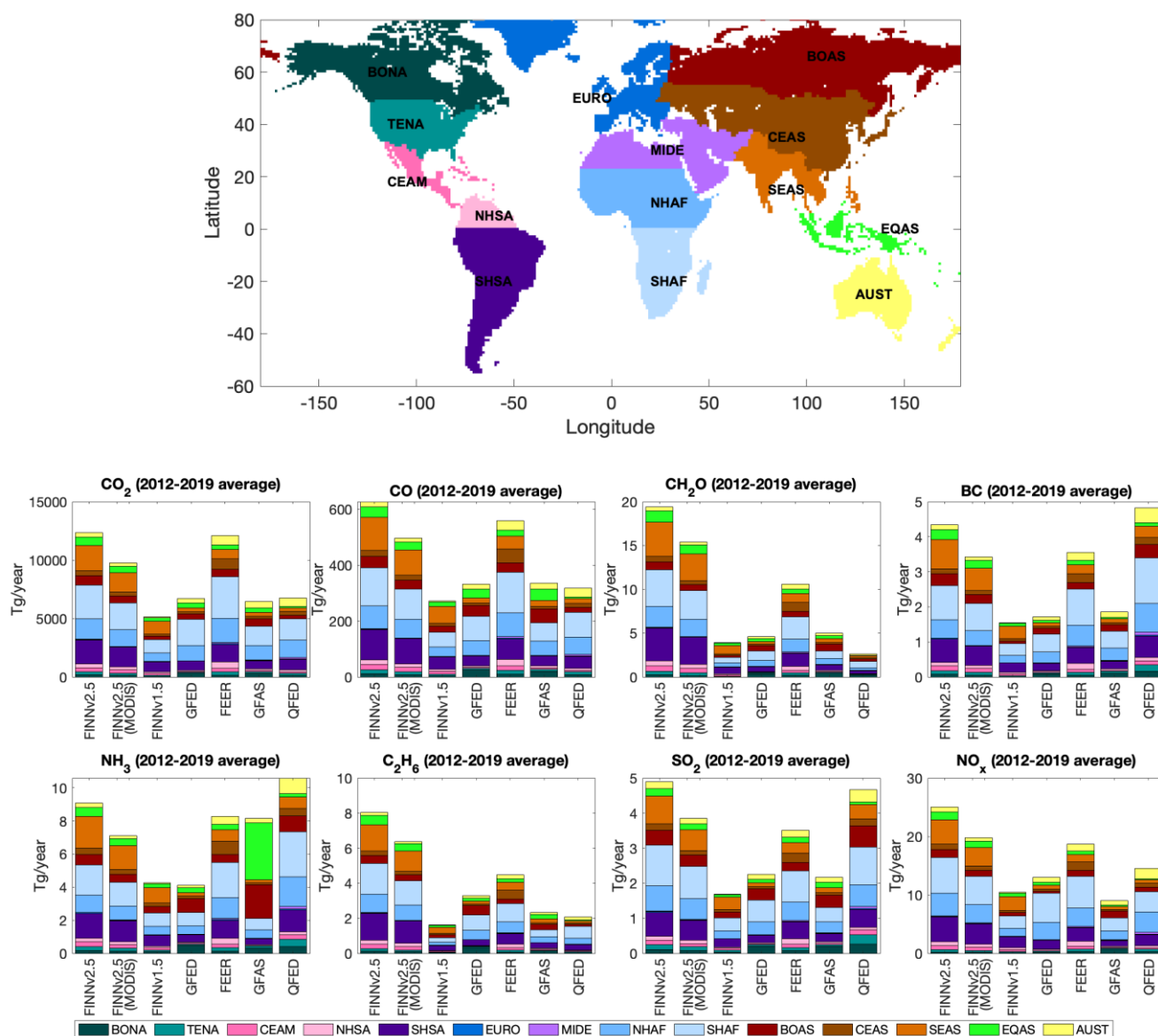
## 3 Results

### 3.1 Emission estimates

FINNv2.5 was processed in two ways for evaluation and assessment: (1) for comparison with the previous version of FINN (FINNv1.5) using MODIS-only fire detections and calculated from 2002, and (2) using both MODIS and VIIRS fire detections and calculated from 2012. FINNv2.5 emissions files are available for download at: <https://www.acom.ucar.edu/Data/fire/> and <https://rda.ucar.edu/datasets/ds312.9/>. For the results presented in this manuscript, results through 2019 are presented.

Estimates from several versions of FINN are compared to other emission inventories: Global Fire Emissions Database (GFED) (van der Werf et al., 2017), Fire Energetics and Emissions Research (FEER) (Ichoku & Ellison, 2014), the Global Fire Assimilation System (GFAS)(Kaiser et al., 2012), and the Quick

Fire Emissions Dataset (QFED) version 2.5 (Darmenov and da Silva, 2015) (Figure 4). The comparisons are done by global region that follows (Giglio et al., 2010) (Figure 4).



**Figure 4.** Annually-averaged (2012-2019) emissions of  $\text{CO}_2$ ,  $\text{CO}$ , formaldehyde ( $\text{CH}_2\text{O}$ ), particulate black carbon (BC), ammonia ( $\text{NH}_3$ ), ethane ( $\text{C}_2\text{H}_6$ ), sulfur dioxide ( $\text{SO}_2$ ), and nitrogen oxides ( $\text{NO}_x$ ) from the Fire Inventory from NCAR version 2.5 (FINNv2.5), FINNv2.5 MODIS-only version, FINNv1.5, Global Fire Emissions Database (GFED), Fire Energetics and Emissions Research (FEER), Global Fire Assimilation System (GFAS), and Quick Fire Emissions Dataset (QFED). Bars show global totals broken up into regional totals by color (Giglio et al., 2010), and shown in the global map here, namely Boreal North America (BONA), Temperate North America (TENA), Central America (CEAM), Northern Hemisphere South America (NHSA), Southern





**Hemisphere South America (SHSA), Europe (EURO), Middle East (MIDE), Northern Hemisphere Africa (NHAF), Southern Hemisphere Africa (SHAF), Boreal Asia (BOAS), Central Asia (CEAS), Southeast Asia (SEAS), Equatorial Asia (EQAS), and Australia and New Zealand (AUST).**

315

Figure 4 compares annual averaged (2012-2019) emissions of key pollutants from several versions of FINN and the other inventories by region. For all emitted species, FINNv2.5 global emissions are higher than, and approximately double, those predicted by FINNv1.5. This is the case, even when only MODIS fire detections are considered. The increase in emissions from previous versions is primarily due to the new processing of area burned. In previous versions, the fire area was determined from a satellite detection pixel only; the updated version here also includes the composite of many detections into larger areas of fire activity (Section 2.1). The inclusion of VIIRS into the FINNv2.5 inventory globally adds approximately 25% above the MODIS-only processing for all emitted species. Previous studies have shown low biases in FINN regional and species-specific estimates: for example, CO in the western US (Pfister et al., 2011) and Australia (Desservettaz et al., 2022), and particulate carbon in North America (Carter et al., 2020). The updated version is expected to correct some of these prior biases.

FINNv2.5 emission estimates are overall at the higher end of the range of annual global total emissions provided by our sample of other commonly used emission inventories, likely due to a combination of the aggregated burned areas and the fact that FINNv2.5 includes fire information from VIIRS, which captures more small fires. However, depending on the pollutant emitted, a comparison across different emission inventories shows varied results. For example, both CO<sub>2</sub> and CO global annual emissions from FINNv2.5 (MODIS-only and MODIS+VIIRS) are higher than QFED; but Black Carbon (BC) and ammonia (NH<sub>3</sub>) are lower in FINNv2.5 than QFED. The primary drivers of these differences are the assumed fuel type burned and associated emission factors. This difference in emission amounts between inventories is more variable when looking regionally and year to year (e.g. Figure 5 and S4).

In general, the year-to-year variabilities of annual fire emissions is consistent between different inventories, and mainly the magnitudes of emissions differ (Figure 5). FINNv2.5 is often among the inventories that produce the highest CO emissions in all 14 global regions. Some notable exceptions are

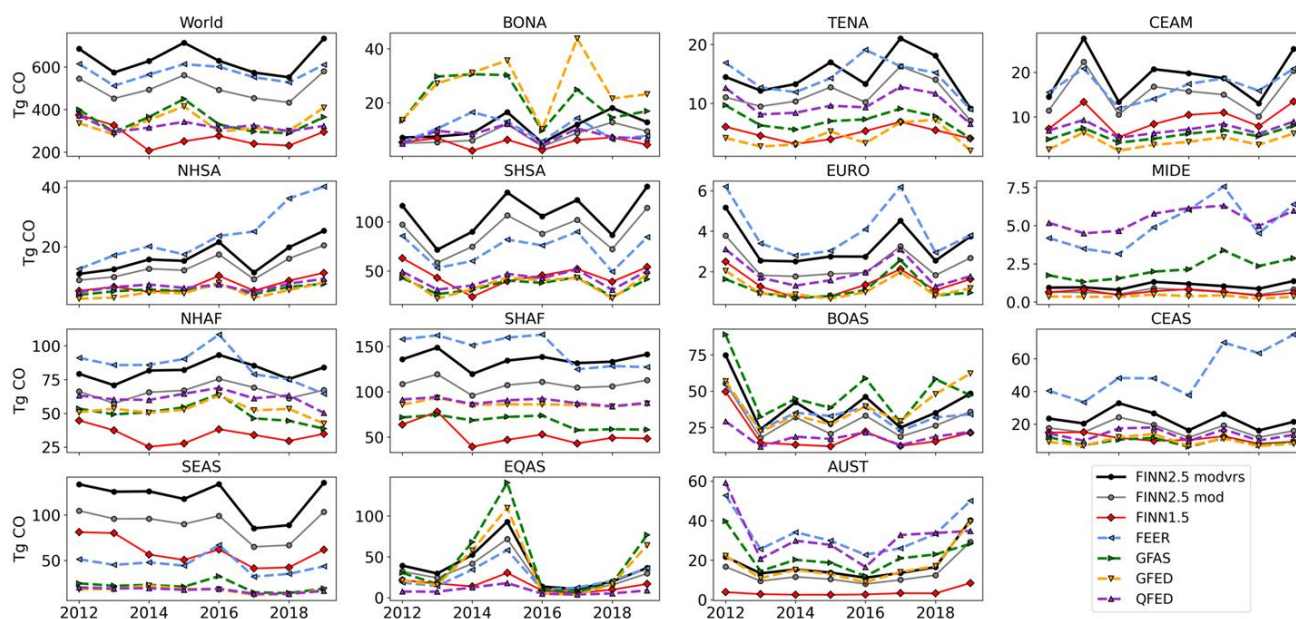


Boreal North America and Boreal Asia, where GFAS and sometimes GFED estimate higher emissions.

340 This is likely due to the representation of smoldering peat fires in the high latitudes that are represented as a specific vegetation type in the GFED and GFAS inventories, but not in FINNv2.5. [Note: Kiely et al. (2019) developed a parameterization used in a version FINNv2 to represent regional peat emissions in Indonesia, but this was not included in FINNv2.5]. Similarly, in Equatorial Asia, GFED and GFAS estimate the highest CO emissions for the years when much of the tropical peatland burned. The

345 magnitude of FINNv2.5 CO emissions in Australia and New Zealand have increased relative to FINNv1.5, which compares better to downwind surface measurements of instantaneous mixing ratios (Desservettaz et al., 2022). However, regional FINNv2.5 emissions remain lower than three other emission inventories (GFAS, QFED, and FEER) in Australia and New Zealand. A similar result is seen

350 over the Middle East, which suggests a potential role of extremely dry landscapes in causing inter-inventory differences. For most other regions, FEER is the only inventory that produces emissions that are either as high in magnitude, or sometimes higher, than FINNv2.5.



355

**Figure 5: Annual total emissions of CO by region between 2012 and 2019 from the Fire Inventory from NCAR version 2.5 MODIS and VIIRS (FINNv2.5 modvrs, black symbols), FINNv2.5 MODIS-only version (FINNv2.5 mod, gray symbols), FINNv1.5, Global**



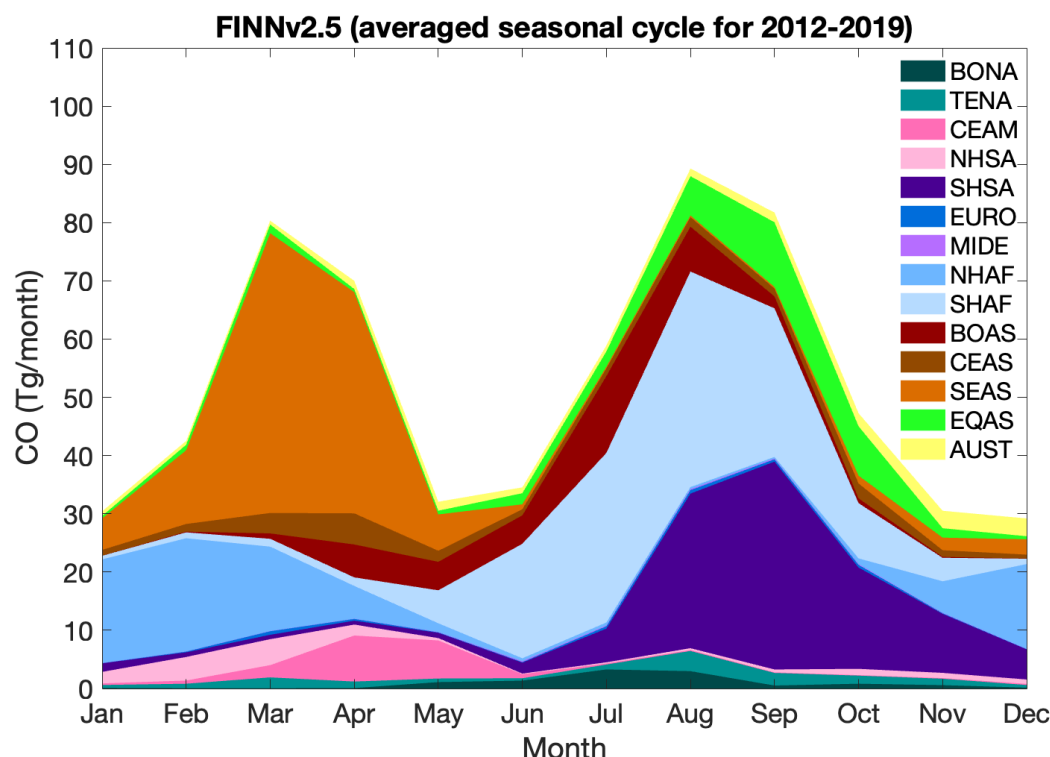
**Fire Emissions Database (GFED), Fire Energetics and Emissions Research (FEER), Global Fire Assimilation System (GFAS), and QuickFire Emissions Dataset (QFED). Regions are defined in Giglio et al. (2010); refer to Figure 4.**



365 The seasonal change of regional fire emissions for CO in FINNv2.5 is shown in Figure 6, with other inventories in Figure S4. Globally, fire emissions peak in August/September, with the largest emissions in Southern Hemisphere Africa and Southern Hemisphere South America. As mentioned above, GFED and GFAS show an increase in Boreal North America in July and August that is not as prevalent in FINNv2.5.

370 FINNv2.5 also has an emission peak in March, which is driven primarily by emissions in Southeast Asia. March/April is a peak fire season in the Northern Hemisphere tropics, and in mainland Southeast Asia, the season is driven primarily by small, agricultural fires. FINNv2.5 uses VIIRS fire detections, which detect these small fires more so than MODIS. Most inventories show this second peak in emissions during March and April; however, it is not seen in GFED, nor is it as pronounced in the other inventories (Figure S4). Consequently, determining the cause of different fire emissions in Southeast Asia is a target for future research. Although the magnitude of the regional emissions in FINNv2.5 is 2-3 times higher than FINNv1.5, the seasonality is similar.

375



**Figure 6.** Seasonal cycle of fire emissions of CO from FINNv2.5 (averaged for 2012-2019) by global region. Region definitions follow Giglio et al. (2010) and are described in Figure 4.

### 3.2 Model simulation using FINNv2.5 compared to satellite products

As shown above, the emission estimates from the different fire emissions models can vary substantially in time and space. It is difficult to know which emission estimates most closely represent reality. One way to assess the emissions is to use them as input to an atmospheric chemistry model and calculate pollutant concentrations that can then be compared to in-situ measurements and satellite observations. To further evaluate FINNv2.5 and understand its uncertainties and limitations, we performed a simulation with the Community Atmosphere Model with Chemistry (CAM-chem), a component of the Community Earth System Model (CESM2.2.0) (Emmons et al., 2020). For this simulation, the temperature and winds of CAM-chem are nudged to the Modern-Era Retrospective analysis for Research and Applications, Version 2 (MERRA-2) reanalysis fields. Anthropogenic emissions are from the Copernicus Atmosphere Monitoring Service (CAMS) v5.1 inventory (Soulie et al., 2023) and biogenic emissions are calculated online with the Model of Emissions of Gases and Aerosols from Nature (MEGAN) version 2.1 (described



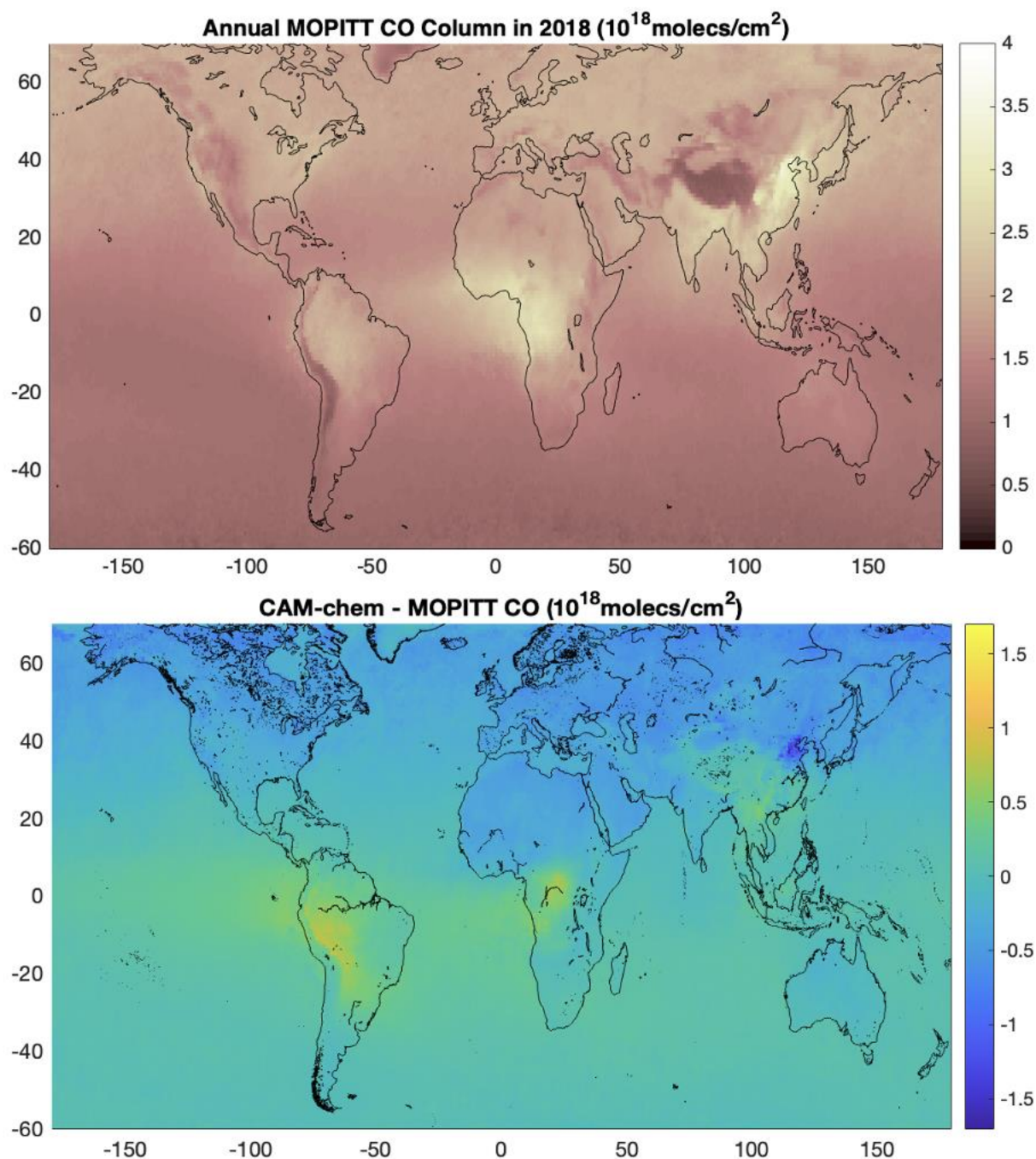
in Emmons et al., 2020). We conduct simulations with FINNv2.5 emissions calculated with combined MODIS and VIIRS active fire detections. Results for the year 2018, after several years of spin-up, are shown here.

The model results with FINNv2.5 emissions are compared to CO column density from the Measurements  
395 Of Pollution In The Troposphere (MOPITT) instrument retrievals (Version 8 Level 3 gridded monthly  
Joint product; MOP03J.008; Deeter et al., 2019), and Aerosol Optical Depth (AOD) from MODIS (Level  
3 gridded monthly global product; MOD08\_M3 and MYD08\_M3; MODIS Atmosphere Science Team,  
2017) (Figures 7 and 8). For the comparisons to the MOPITT retrievals, the model CO profiles are  
transformed with the MOPITT averaging kernels and a priori profile. The Joint retrieval product  
400 combines the thermal-infrared (TIR) and near-infrared (NIR) radiances to provide greater sensitivity to  
the boundary layer than the TIR retrievals alone.

Overall, CAM-chem driven with FINNv2.5 (MODIS+VIIRS) overestimates satellite-observed AOD and  
CO over the Amazon Basin and central Africa during the 2018 fire season (Figures 7-9). This result  
suggests that FINNv2.5 overestimates fire emissions over Amazon Basin and central Africa in the 2018  
405 fire season. This overestimation could be due to a number of reasons, including inaccurate ecosystem  
identification (tropical forest, rather than shrublands or less wooded landscapes) and/or fuel loading  
assignments. The model also overestimates AOD, but not CO, over Australia and Northern Africa. These  
discrepancies are likely due to overestimated dust emissions in the model simulation rather than  
overestimated fire emissions from FINNv2.5.

410 There are important fire regions where the model predictions and observations agree. For example, the  
CAM-chem results using FINNv2.5 simulate column-measured CO in August 2018 (Figure 9) for the  
Pacific Northwest well. This is consistent with a previous study, which evaluated CAM-chem with  
regional refinement over the Pacific Northwest with aircraft observations during the Western wildfire  
Experiment for Cloud chemistry, Aerosol absorption and Nitrogen (WE-CAN) (Tang et al., 2022), and  
415 found that simulated CO concentrations agreed reasonably with aircraft measurements.





**Figure 7.** Global distribution of CO column density from the Measurement of Pollution in the Troposphere (MOPITT) averaged for 2018, and the corresponding Community Atmosphere Model with Chemistry (CAM-chem) model simulation bias (model minus observations) for CO column density. The CAM-chem simulation used FINNv2.5(MODIS+VIIRS) for fire emissions.

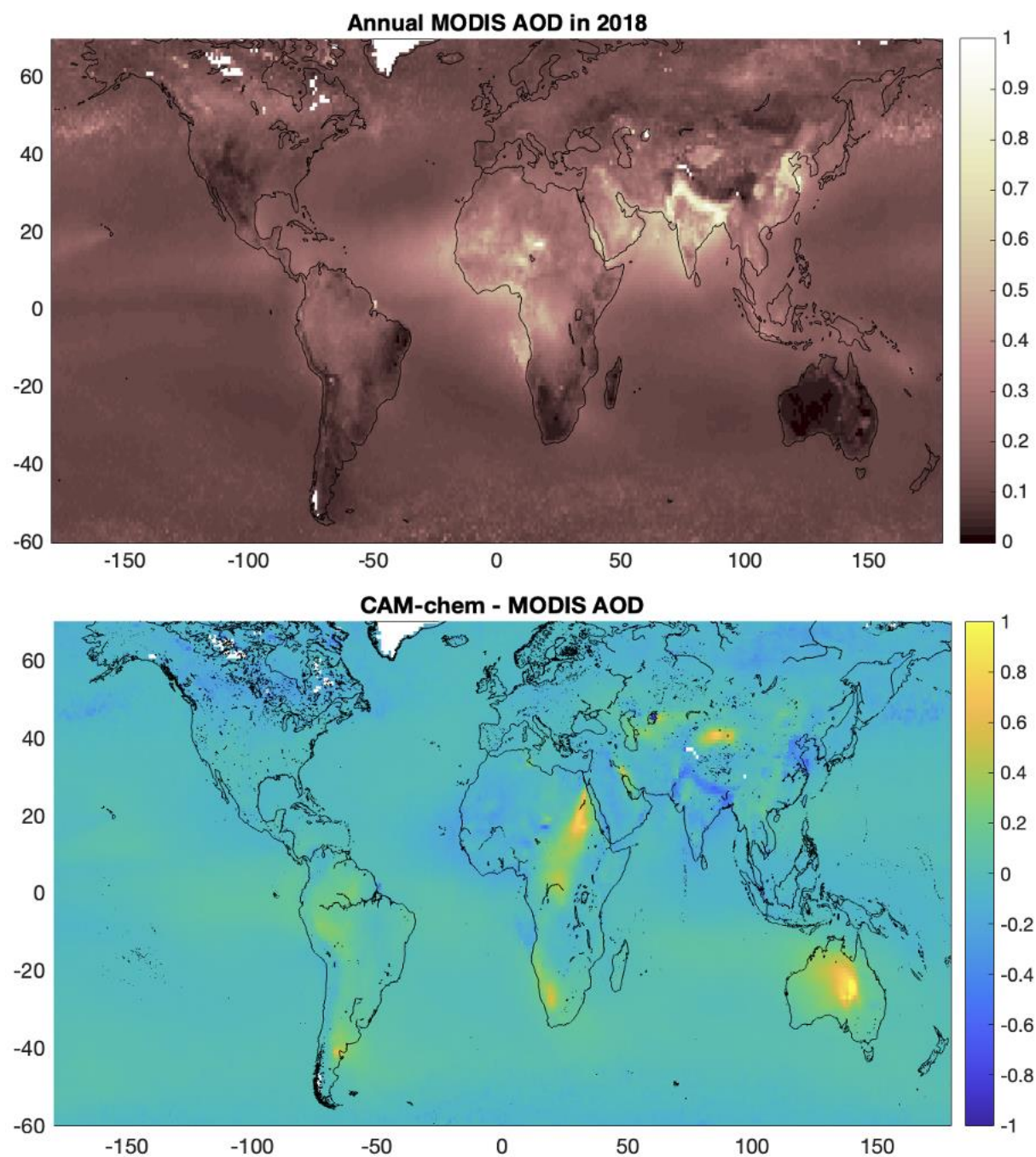
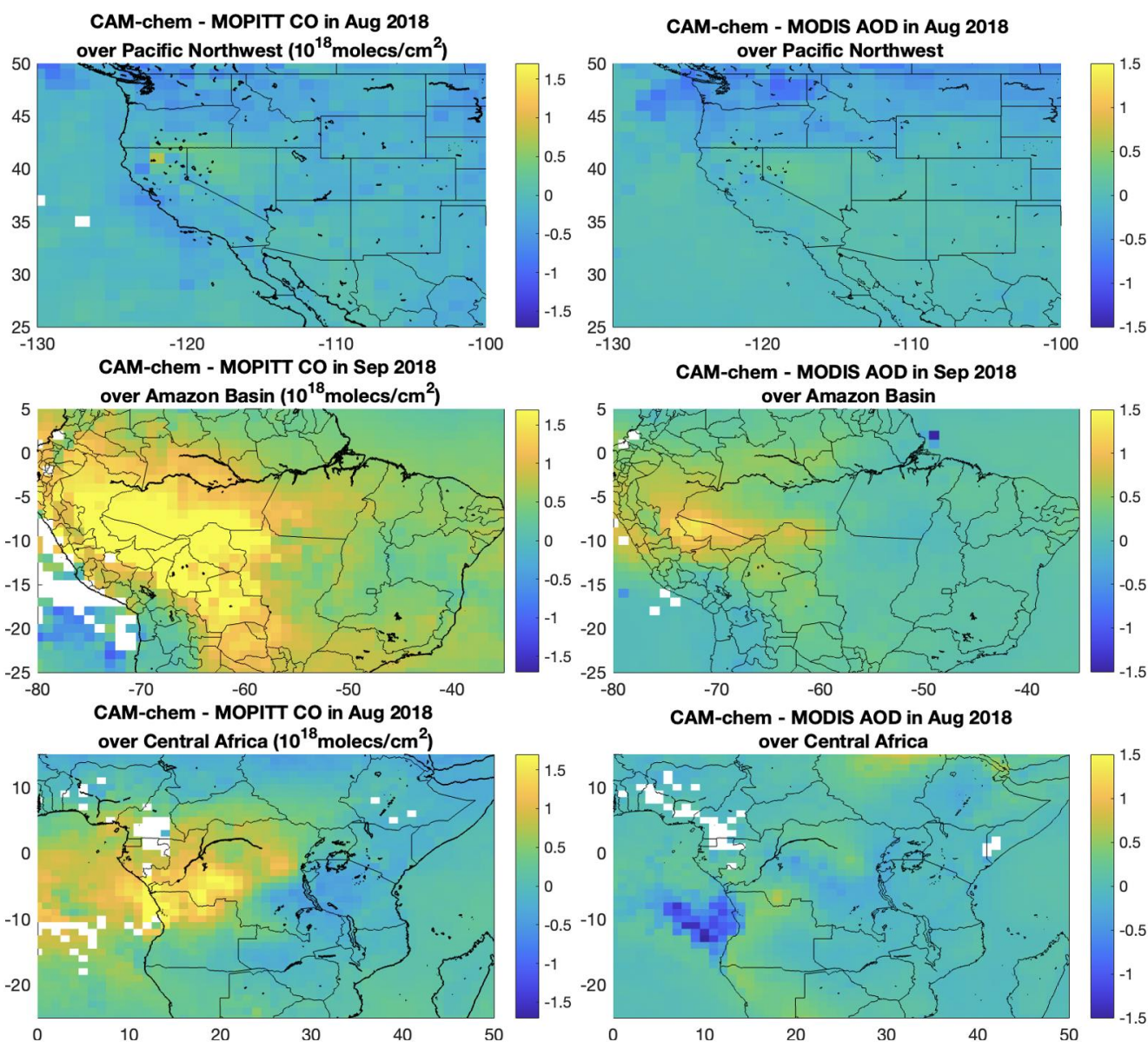


Figure 8. Global distribution of aerosol optical depth (AOD) from the Moderate Resolution Imaging Spectroradiometer (MODIS) averaged for 2018, and the corresponding Community Atmosphere Model with Chemistry (CAM-chem) model simulation bias (model minus observation) for AOD. The CAM-chem simulation used FINNv2.5(MODIS+VIIRS) for fire emissions.





**Figure 9.** Community Atmosphere Model with Chemistry (CAM-chem) model simulation bias from MOPITT CO column density (left column) and MODIS AOD (right column) for 3 regions. Top row: the U.S. Pacific Northwest in August 2018; Middle row: Amazon Basin in September 2018; Bottom row: Central Africa in August 2018. The months are selected to represent the fire season in each region.

### 3.3 Uncertainties

Despite updates to the input data, parameters, and processing, FINNv2.5 emission estimates remain uncertain. Uncertainties are caused by natural variability associated with the various inputs to the model,



435 and the model assumptions and processes used to create the estimates. Uncertainties may arise due to  
missed fire detections caused by cloud or smoke cover, timing, and incomplete global coverage from the  
polar orbiting satellite paths. Further, the assumed vegetation type and amount that is burned in active  
fires are highly variable, and the use of different vegetation maps can introduce large changes in the  
predicted emissions. The assumed fuel loading, fraction burned, and resulting fuel consumption can be  
440 highly variable in space and time, whereas the model assumes best-guess average values for generic  
ecosystems by global region. The emission factors used also add some uncertainty to the estimates, which  
is particularly highlighted in the emission estimates of particles and reactive gases. Other issues arise  
when VIIRS and MODIS are used in combination to drive the emission estimates, compared to the  
MODIS-only version. We recognize that the addition of a second dataset from VIIRS increases the  
445 emissions compared to those estimated using MODIS-only.

Wiedinmyer et al (2011) estimated an uncertainty of a factor of two in the FINNv1 estimates. Other efforts  
have assigned uncertainty to fire emissions estimates (e.g., Kennedy et al., 2020; Soares et al., 2015;  
Urbanski et al., 2011); however, limitations in our ability to directly measure fire emissions (fluxes)  
prevent a comprehensive, global evaluation of existing inventories. Discrepancies between model  
450 predictions and evaluations with model output, in-situ measurements, and satellite observations can help  
identify the processes in the models that drive the uncertainties, and the regions across the globe that are  
the most important and uncertain. Results from the evaluation presented here suggest that high  
uncertainties in emissions occur in South America and Southern Africa, and in Southeast and Equatorial  
Asia. Emissions across boreal North America should also be assessed; wide variations in Organic Carbon  
455 (OC) and BC emissions in this region lead to significant uncertainty in the ability to estimate air quality  
and climate impacts from biomass burning (Carter et al., 2020). Further, while CO and AOD are often  
used to assess aerosol and CO emissions estimates, the emissions of other important pollutants are more  
highly variable across inventories and should be further constrained.



## 4 Conclusions

460 FINN version 2.5 was created by updating multiple processes and parameters of the original FINN model framework. This version includes improved area burned calculation, using year-specific land cover and vegetation datasets, updating fuel loading and emission factors, and enabling the use of multiple fire detection satellite inputs (for example MODIS and VIIRS). The code to process the burned area and overlaid land cover, as well as the IDL code to calculate the emissions and speciate the NMOGs, is  
465 available at <https://github.com/NCAR/finn-preprocessor>. The resulting emissions files are now available for use by the community and available at <https://www.acom.ucar.edu/Data/fire/> and <https://rda.ucar.edu/datasets/ds312.9/>.

Specific, one-time modifications to FINN have included emissions from peat in Southeast Asia (Kiely et al., 2019) and the consideration of burn severity in the emissions calculations from California (Q. Xu et  
470 al., 2022). These may be incorporated into future versions of FINN. Future efforts will also improve emission estimates for fires in the wildland urban interface.

The FINNv2.5 emissions estimates remain uncertain, and more evaluation and model comparisons are recommended, especially in southern hemisphere South America and Africa during August - October, as well as southeast and equatorial Asia in March/April. FINNv2 does, however, appear to better simulate  
475 emissions in the western US, as compared to earlier versions (e.g., Pfister et al., 2011). The vegetation type and associated fuel loading and consumption are large sources of uncertainty; the use of a different global vegetation map other than the MODIS LCT can lend to large variations in the predicted emissions. Future efforts to improve fire emissions estimates should focus on these components of the model.

### Code Availability

480 The code to process the burned area and overlaid land cover, as well as the IDL code to calculate the emissions and speciate the NMOGs, is available at <https://github.com/NCAR/finn-preprocessor>. Software to grid the text files for use in 3D models is available on the NCAR/ACOM FINN website (<https://www.acom.ucar.edu/Data/fire/>).



## Data Availability

485 The FINNv2.5 emissions are available from the NCAR Research Data Archive  
(<https://rda.ucar.edu/datasets/ds312.9/>; <https://doi.org/10.5065/XNPA-AF09>) in NetCDF files. The  
emissions are provided for each fire, and also gridded to  $0.1 \times 0.1$  degrees. In both cases, files of daily  
emissions are provided for each year, and both MODIS-only and MODIS+VIIRS results. The files of  
emissions from each fire are provided in 4 groups: ‘base’ has non-NMOG emissions (e.g., CO<sub>2</sub>, CH<sub>4</sub>,  
490 CO, NO, NO<sub>2</sub>, aerosols, total NMOG); ‘MOZART-vocs’ has NMOGs speciated to the MOZART-T1  
mechanism; ‘SAPRC-vocs’ has NMOGs speciated to SAPRC99; ‘GEOSCHEM-vocs’ has NMOGs  
speciated for the GEOS-Chem mechanism.

The FINNv2.5 emissions files are also available as plain text files, in zipped files for each year (MODIS-  
only and MODIS+VIIRS versions) from the NCAR Research Data Archive  
495 (<https://rda.ucar.edu/datasets/ds312.9/>).

## Author Contributions

CW contributed to all aspects of the project, from model design, management, resource acquisition, model development and  
evaluation. CW prepared the manuscript with contributions from all co-authors. LKE, WT, RRB assisted in the implementation  
and evaluation, and led the deployment of the emissions files online. ECMD acquired resources for the development and  
500 advised on model development and evaluation. YK let the model development. MJ and KS provided technical support for  
model development and model simulations. KB, AMC and RY provided key inputs in the model development and evaluation.

## Competing Interests

The authors declare that they have no conflict of interest.

## Acknowledgements

505 The development of the FINNv2.5 model framework, the estimates and the evaluation were supported through several different  
funding sources including NOAA CPO Grant NA17OAR4310103; US NSF grant no.1822406; and NASA award  
80NSSC18K0681. Funding was also provided by the Texas Air Quality Research Program (AQRP Projects 14-011 and 18-  
022) at The University of Texas at Austin through the Texas Emission Reduction Program and the Texas Commission on  
Environmental Quality (TCEQ). Support for most CIRES employees is from NOAA award no. NA17OAR4320101 and



510 NA22OAR4320151. Support for KB was also from NOAA CPO award no. NA17OAR4310007. R. Y. was supported by NSF  
 Grants AGS-1748266 and AGS-1349976, NOAA-CPO Grant NA16OAR4310100, and NASA Grant NNX14AP45G. The  
 authors thank the many users of the FINN emission estimates for their support in the evaluation and QA/QC efforts. This  
 material is based upon work supported by the National Center for Atmospheric Research, which is a major facility sponsored  
 by the National Science Foundation under Cooperative Agreement No. 1852977. The findings, opinions and conclusions are  
 515 the work of the authors and do not necessarily represent findings, opinions, or conclusions of the Texas AQRP or the TCEQ.

## References

- Akagi, S. K., Yokelson, R. J., Wiedinmyer, C., Alvarado, M. J., Reid, J. S., Karl, T., Crounse, J. D., and  
 Wennberg, P. O.: Emission factors for open and domestic biomass burning for use in atmospheric models,  
 Atmospheric Chemistry and Physics, 11, 4039–4072, 2011.
- 520 Andreae, M. O. and Merlet, P.: Emission of trace gases and aerosols from biomass burning, Global  
 Biogeochem. Cycles, 15, 955–966, <https://doi.org/10.1029/2000GB001382>, 2001.
- Andreae, M. O. and Rosenfeld, D.: Aerosol–cloud–precipitation interactions. Part 1. The nature and  
 sources of cloud-active aerosols, Earth-Science Reviews, 89, 13–41,  
<https://doi.org/10.1016/j.earscirev.2008.03.001>, 2008.
- 525 Armenteras, D., Dávalos, L. M., Barreto, J. S., Miranda, A., Hernández-Moreno, A., Zamorano-Elgueta,  
 C., González-Delgado, T. M., Meza-Elizalde, M. C., and Retana, J.: Fire-induced loss of the world’s most  
 biodiverse forests in Latin America, Sci. Adv., 7, eabd3357, <https://doi.org/10.1126/sciadv.abd3357>,  
 2021.
- 530 Bourgeois, I., Peischl, J., Neuman, J. A., Brown, S. S., Thompson, C. R., Aikin, K. C., Allen, H. M.,  
 Angot, H., Apel, E. C., Baublitz, C. B., Brewer, J. F., Campuzano-Jost, P., Commane, R., Crounse, J. D.,  
 Daube, B. C., DiGangi, J. P., Diskin, G. S., Emmons, L. K., Fiore, A. M., Gkatzelis, G. I., Hills, A.,  
 Hornbrook, R. S., Huey, L. G., Jimenez, J. L., Kim, M., Lacey, F., McKain, K., Murray, L. T., Nault, B.  
 A., Parrish, D. D., Ray, E., Sweeney, C., Tanner, D., Wofsy, S. C., and Ryerson, T. B.: Large contribution  
 of biomass burning emissions to ozone throughout the global remote troposphere, Proc. Natl. Acad. Sci.  
 535 U.S.A., 118, e2109628118, <https://doi.org/10.1073/pnas.2109628118>, 2021.
- Bray, C. D., Battye, W., Aneja, V. P., Tong, D. Q., Lee, P., and Tang, Y.: Ammonia emissions from  
 biomass burning in the continental United States, Atmospheric Environment, 187, 50–61,  
<https://doi.org/10.1016/j.atmosenv.2018.05.052>, 2018.
- Burke, M., Driscoll, A., Heft-Neal, S., Xue, J., Burney, J., and Wara, M.: The changing risk and burden  
 540 of wildfire in the United States, Proc. Natl. Acad. Sci. U.S.A., 118, e2011048118,  
<https://doi.org/10.1073/pnas.2011048118>, 2021.





- Carroll, M., Townshend, J. R. G., Hansen, M. C., Dimiceli, C., Sohlberg, R. A., and Wurster, K.: Vegetative Cover Conversion and Vegetation Continuous Fields, in: Land Remote Sensing and Global Environmental Change: NASA's Earth Observing System and the Science of Aster and MODIS, vol. 11, Springer-Verlag, 725–746, 2011.
- Carter, T. S., Heald, C. L., Jimenez, J. L., Campuzano-Jost, P., Kondo, Y., Moteki, N., Schwarz, J. P., Wiedinmyer, C., Darmenov, A. S., da Silva, A. M., and Kaiser, J. W.: How emissions uncertainty influences the distribution and radiative impacts of smoke from fires in North America, *Atmos. Chem. Phys.*, 20, 2073–2097, <https://doi.org/10.5194/acp-20-2073-2020>, 2020.
- Crippa, P., Castruccio, S., Archer-Nicholls, S., Lebron, G. B., Kuwata, M., Thota, A., Sumin, S., Butt, E., Wiedinmyer, C., and Spracklen, D. V.: Population exposure to hazardous air quality due to the 2015 fires in Equatorial Asia, *Sci Rep*, 6, 37074, <https://doi.org/10.1038/srep37074>, 2016.
- Csiszar, I., Schroeder, W., Giglio, L., Ellicott, E., Vadrevu, K. P., Justice, C. O., and Wind, B.: Active fires from the Suomi NPP Visible Infrared Imaging Radiometer Suite: Product status and first evaluation results: ACTIVE FIRES FROM SUOMI NPP VIIRS, *J. Geophys. Res. Atmos.*, 119, 803–816, <https://doi.org/10.1002/2013JD020453>, 2014.
- Darmenov, A. and da Silva, A.: The quick fire emissions dataset (QFED)—Documentation of versions 2.1, 2.2, and 2.4. NASA//TM-2015-104606. <https://gmao.gsfc.nasa.gov/pubs/docs/Darmenov796.pdf>. 2015.
- Davies, D. K., Ilavajhala, S., Min Minnie Wong, and Justice, C. O.: Fire Information for Resource Management System: Archiving and Distributing MODIS Active Fire Data, *IEEE Trans. Geosci. Remote Sensing*, 47, 72–79, <https://doi.org/10.1109/TGRS.2008.2002076>, 2009.
- Deeter, M. N., Edwards, D. P., Francis, G. L., Gille, J. C., Mao, D., Martínez-Alonso, S., Worden, H. M., Ziskin, D., and Andreae, M. O.: Radiance-based retrieval bias mitigation for the MOPITT instrument: the version 8 product, *Atmos. Meas. Tech.*, 12, 4561–4580, <https://doi.org/10.5194/amt-12-4561-2019>, 2019.
- Desservettaz, M. J., Fisher, J. A., Luhar, A. K., Woodhouse, M. T., Bukosa, B., Buchholz, R. R., Wiedinmyer, C., Griffith, D. W. T., Krummel, P. B., Jones, N. B., Deutscher, N. M., and Greenslade, J. W.: Australian Fire Emissions of Carbon Monoxide Estimated by Global Biomass Burning Inventories: Variability and Observational Constraints, *JGR Atmospheres*, 127, <https://doi.org/10.1029/2021JD035925>, 2022.
- Dintwe, K., Okin, G. S., and Xue, Y.: Fire-induced albedo change and surface radiative forcing in sub-Saharan Africa savanna ecosystems: Implications for the energy balance, *JGR Atmospheres*, 122, 6186–6201, <https://doi.org/10.1002/2016JD026318>, 2017.
- Elguindi, N., Granier, C., Stavrakou, T., Darras, S., Bauwens, M., Cao, H., Chen, C., Denier van der Gon, H. A. C., Dubovik, O., Fu, T. M., Henze, D. K., Jiang, Z., Keita, S., Kuenen, J. J. P., Kurokawa, J.,



- Lioussé, C., Miyazaki, K., Müller, J. -F., Qu, Z., Solmon, F., and Zheng, B.: Intercomparison of Magnitudes and Trends in Anthropogenic Surface Emissions From Bottom-Up Inventories, Top-Down Estimates, and Emission Scenarios, *Earth's Future*, 8, <https://doi.org/10.1029/2020EF001520>, 2020.
- Emmons, L. K., Schwantes, R. H., Orlando, J. J., Tyndall, G., Kinnison, D., Lamarque, J., Marsh, D.,  
 580 Mills, M. J., Tilmes, S., Bardeen, C., Buchholz, R. R., Conley, A., Gettelman, A., Garcia, R., Simpson, I., Blake, D. R., Meinardi, S., and Pétron, G.: The Chemistry Mechanism in the Community Earth System Model Version 2 (CESM2), *J. Adv. Model. Earth Syst.*, 12, <https://doi.org/10.1029/2019MS001882>, 2020.
- Fang, Z., Deng, W., Zhang, Y., Ding, X., Tang, M., Liu, T., Hu, Q., Zhu, M., Wang, Z., Yang, W., Huang,  
 585 Z., Song, W., Bi, X., Chen, J., Sun, Y., George, C., and Wang, X.: Open burning of rice, corn and wheat straws: primary emissions, photochemical aging, and secondary organic aerosol formation, *Atmos. Chem. Phys.*, 17, 14821–14839, <https://doi.org/10.5194/acp-17-14821-2017>, 2017.
- Faulstich, S. D., Schissler, A. G., Strickland, M. J., and Holmes, H. A.: Statistical Comparison and Assessment of Four Fire Emissions Inventories for 2013 and a Large Wildfire in the Western United  
 590 States, *Fire*, 5, 27, <https://doi.org/10.3390/fire5010027>, 2022.
- Ford, B., Val Martin, M., Zelasky, S. E., Fischer, E. V., Anenberg, S. C., Heald, C. L., and Pierce, J. R.: Future Fire Impacts on Smoke Concentrations, Visibility, and Health in the Contiguous United States, *GeoHealth*, 2, 229–247, <https://doi.org/10.1029/2018GH000144>, 2018.
- Friedl, M. A., Sulla-Menashe, D., Tan, B., Schneider, A., Ramankutty, N., Sibley, A., and Huang, X.:  
 595 MODIS Collection 5 global land cover: Algorithm refinements and characterization of new datasets, *Remote Sensing of Environment*, 114, 168–182, <https://doi.org/10.1016/j.rse.2009.08.016>, 2010.
- Giglio, L., Csiszar, I., and Justice, C. O.: Global distribution and seasonality of active fires as observed with the Terra and Aqua Moderate Resolution Imaging Spectroradiometer (MODIS) sensors: GLOBAL FIRE DISTRIBUTION AND SEASONALITY, *J. Geophys. Res.*, 111, n/a-n/a,  
 600 <https://doi.org/10.1029/2005JG000142>, 2006.
- Giglio, L., Randerson, J. T., van der Werf, G. R., Kasibhatla, P. S., Collatz, G. J., Morton, D. C., and DeFries, R. S.: Assessing variability and long-term trends in burned area by merging multiple satellite fire products, *Biogeosciences*, 7, 1171–1186, <https://doi.org/10.5194/bg-7-1171-2010>, 2010.
- Hansen, M. C., DeFries, R. S., Townshend, J. R. G., Carroll, M., Dimiceli, C., and Sohlberg, R. A.: Global  
 605 Percent Tree Cover at a Spatial Resolution of 500 Meters: First Results of the MODIS Vegetation Continuous Fields Algorithm, *Earth Interact.*, 7, 1–15, [https://doi.org/10.1175/1087-3562\(2003\)007<0001:GPTCAA>2.0.CO;2](https://doi.org/10.1175/1087-3562(2003)007<0001:GPTCAA>2.0.CO;2), 2003.
- Hansen, M. C., Townshend, J. R. G., DeFries, R. S., and Carroll, M.: Estimation of tree cover using MODIS data at global, continental and regional/local scales, *International Journal of Remote Sensing*, 26,



610 4359–4380, <https://doi.org/10.1080/01431160500113435>, 2005.

Hoelzemann, J. J.: Global Wildland Fire Emission Model (GWEM): Evaluating the use of global area burnt satellite data, *J. Geophys. Res.*, 109, D14S04, <https://doi.org/10.1029/2003JD003666>, 2004.

Hurteau, M. D., Westerling, A. L., Wiedinmyer, C., and Bryant, B. P.: Projected Effects of Climate and Development on California Wildfire Emissions through 2100, *Environ. Sci. Technol.*, 140203132416003, 615 <https://doi.org/10.1021/es4050133>, 2014.

Ichoku, C. and Ellison, L.: Global top-down smoke-aerosol emissions estimation using satellite fire radiative power measurements, *Atmos. Chem. Phys.*, 14, 6643–6667, <https://doi.org/10.5194/acp-14-6643-2014>, 2014.

Ito, A. and Penner, J.: Global estimates of biomass burning emissions based on satellite imagery for the 620 year 2000, *J. Geophys. Res.*, 109, D14S05, <https://doi.org/10.1029/2003JD004423>, 2004.

Jaffe, D. A., O'Neill, S. M., Larkin, N. K., Holder, A. L., Peterson, D. L., Halofsky, J. E., and Rappold, A. G.: Wildfire and prescribed burning impacts on air quality in the United States, *Journal of the Air & Waste Management Association*, 70, 583–615, <https://doi.org/10.1080/10962247.2020.1749731>, 2020.

Jin, Y., Randerson, J. T., Goulden, M. L., and Goetz, S. J.: Post-fire changes in net shortwave radiation 625 along a latitudinal gradient in boreal North America: FIRE-INDUCED LATITUDINAL SURFACE FORCING, *Geophys. Res. Lett.*, 39, n/a-n/a, <https://doi.org/10.1029/2012GL051790>, 2012.

Kaiser, J. W., Heil, A., Andreae, M. O., Benedetti, A., Chubarova, N., Jones, L., Morcrette, J.-J., Razinger, M., Schultz, M. G., Suttie, M., and van der Werf, G. R.: Biomass burning emissions estimated with a 630 global fire assimilation system based on observed fire radiative power, *Biogeosciences*, 9, 527–554, <https://doi.org/10.5194/bg-9-527-2012>, 2012.

Kelly, L. T., Giljohann, K. M., Duane, A., Aquilué, N., Archibald, S., Batllori, E., Bennett, A. F., Buckland, S. T., Canelles, Q., Clarke, M. F., Fortin, M.-J., Hermoso, V., Herrando, S., Keane, R. E., Lake, F. K., McCarthy, M. A., Morán-Ordóñez, A., Parr, C. L., Pausas, J. G., Penman, T. D., Regos, A., Rumpff, L., Santos, J. L., Smith, A. L., Syphard, A. D., Tingley, M. W., and Brotons, L.: Fire and biodiversity in 635 the Anthropocene, *Science*, 370, eabb0355, <https://doi.org/10.1126/science.abb0355>, 2020.

Kennedy, M. C., Prichard, S. J., McKenzie, D., and French, N. H. F.: Quantifying how sources of uncertainty in combustible biomass propagate to prediction of wildland fire emissions, *Int. J. Wildland Fire*, 29, 793, <https://doi.org/10.1071/WF19160>, 2020.

Kiely, L., Spracklen, D. V., Wiedinmyer, C., Conibear, L., Reddington, C. L., Archer-Nicholls, S., Lowe, 640 D., Arnold, S. R., Knote, C., Khan, M. F., Latif, M. T., Kuwata, M., Budisulistiorini, S. H., and Syaufina, L.: New estimate of particulate emissions from Indonesian peat fires in 2015, *Atmospheric Chemistry and Physics*, 19, 11105–11121, <https://doi.org/10.5194/acp-19-11105-2019>, 2019.





- Kopplitz, S. N., Nolte, C. G., Pouliot, G. A., Vukovich, J. M., and Beidler, J.: Influence of uncertainties in burned area estimates on modeled wildland fire PM<sub>2.5</sub> and ozone pollution in the contiguous U.S., *Atmospheric Environment*, 191, 328–339, <https://doi.org/10.1016/j.atmosenv.2018.08.020>, 2018.
- Kulkarni, S. H., Ghude, S. D., Jena, C., Karumuri, R. K., Sinha, B., Sinha, V., Kumar, R., Soni, V. K., and Khare, M.: How Much Does Large-Scale Crop Residue Burning Affect the Air Quality in Delhi?, *Environ. Sci. Technol.*, 54, 4790–4799, <https://doi.org/10.1021/acs.est.0c00329>, 2020.
- Larkin, N. K., Raffuse, S. M., and Strand, T. M.: Wildland fire emissions, carbon, and climate: U.S. emissions inventories, *Forest Ecology and Management*, 317, 61–69, <https://doi.org/10.1016/j.foreco.2013.09.012>, 2014.
- van Leeuwen, T. T., van der Werf, G. R., Hoffmann, A. A., Detmers, R. G., Rücker, G., French, N. H. F., Archibald, S., Carvalho Jr., J. A., Cook, G. D., de Groot, W. J., Hély, C., Kasischke, E. S., Kloster, S., McCarty, J. L., Pettinari, M. L., Savadogo, P., Alvarado, E. C., Boschetti, L., Manuri, S., Meyer, C. P., Siegert, F., Trollope, L. A., and Trollope, W. S. W.: Biomass burning fuel consumption rates: a field measurement database, *Biogeosciences*, 11, 7305–7329, <https://doi.org/10.5194/bg-11-7305-2014>, 2014.
- Liu, T., Mickley, L. J., Marlier, M. E., DeFries, R. S., Khan, M. F., Latif, M. T., and Karambelas, A.: Diagnosing spatial biases and uncertainties in global fire emissions inventories: Indonesia as regional case study, *Remote Sensing of Environment*, 237, 111557, <https://doi.org/10.1016/j.rse.2019.111557>, 2020.
- Liu, X., Huey, L. G., Yokelson, R. J., Selimovic, V., Simpson, I. J., Müller, M., Jimenez, J. L., Campuzano-Jost, P., Beyersdorf, A. J., Blake, D. R., Butterfield, Z., Choi, Y., Crounse, J. D., Day, D. A., Diskin, G. S., Dubey, M. K., Fortner, E., Hanisco, T. F., Hu, W., King, L. E., Kleinman, L., Meinardi, S., Mikoviny, T., Onasch, T. B., Palm, B. B., Peischl, J., Pollack, I. B., Ryerson, T. B., Sachse, G. W., Sedlacek, A. J., Shilling, J. E., Springston, S., St. Clair, J. M., Tanner, D. J., Teng, A. P., Wennberg, P. O., Wisthaler, A., and Wolfe, G. M.: Airborne measurements of western U.S. wildfire emissions: Comparison with prescribed burning and air quality implications, *JGR Atmospheres*, 122, 6108–6129, <https://doi.org/10.1002/2016JD026315>, 2017.
- Liu, Z., Ballantyne, A. P., and Cooper, L. A.: Biophysical feedback of global forest fires on surface temperature, *Nat Commun*, 10, 214, <https://doi.org/10.1038/s41467-018-08237-z>, 2019.
- Ma, G., Zhao, T., Kong, S., Bao, Y., Chen, C., Gong, S., Guo, J., Yu, C., Wu, M., Chang, J., and You, Y.: Variations in FINN Emissions of Particulate Matters and Associated Carbonaceous Aerosols from Remote Sensing of Open Biomass Burning over Northeast China during 2002–2016, *Sustainability*, 10, 3353, <https://doi.org/10.3390/su10093353>, 2018.
- McCarty, J. L., Pouliot, G., Raffuse, S. M., Ruminski, M., Szykman, J., and Soja, A. J.: Using Satellite Data to Quantify Cropland Burning and Related Emissions in the Contiguous United States: Lessons Learned, in: *Emission Inventories – Meeting the Challenges Posed by Emerging Global, National,*



Regional and Local Air Quality Issues, International Emission Inventory Conference, Tampa, Florida, 2012.

680 McDonald-Buller, E., Wiedinmyer, C., Kimura, Y., and Allen, D.: Effects of land use data on dry deposition in a regional photochemical model for eastern Texas, *J. Air Waste Manage. Assoc.*, 51, 1211–1218, <https://doi.org/10.1080/10473289.2001.10464340>, 2001.

McMeeking, G. R.: The optical, chemical, and physical properties of aerosols and gases emitted by the laboratory combustion of wildland fuels, Ph.D. Dissertation, Department of Atmospheric Sciences,  
 685 Colorado State University, Ft. Collins, CO, 109–113 pp., 2008.

MODIS Atmosphere Science Team: MODIS/Terra Aerosol Cloud Water Vapor Ozone Monthly L3 Global 1Deg CMG, [https://doi.org/10.5067/MODIS/MOD08\\_M3.061](https://doi.org/10.5067/MODIS/MOD08_M3.061), 2017.

NASA/University of Maryland: MODIS Hotspot/Active Fire Detections, Data set, MODIS Rapid Response Project, NASA/GSFC (producer), University of Maryland, Fire Information for Resource  
 690 Management System (distributors), available at: <http://maps.geog.umd.edu>, 2002.

Nawaz, M. O. and Henze, D. K.: Premature Deaths in Brazil Associated With Long-Term Exposure to PM<sub>2.5</sub> From Amazon Fires Between 2016 and 2019, *GeoHealth*, 4, <https://doi.org/10.1029/2020GH000268>, 2020.

Nuryanto, D. E.: Simulation of Forest Fires Smoke Using WRF-Chem Model with FINN Fire Emissions in Sumatera, *Procedia Environmental Sciences*, 24, 65–69, <https://doi.org/10.1016/j.proenv.2015.03.010>,  
 695 2015.

Paton-Walsh, C., Smith, T. E. L., Young, E. L., Griffith, D. W. T., and Guérette, É.-A.: New emission factors for Australian vegetation fires measured using open-path Fourier transform infrared spectroscopy – Part 1: Methods and Australian temperate forest fires, *Atmos. Chem. Phys.*, 14, 11313–11333,  
 700 <https://doi.org/10.5194/acp-14-11313-2014>, 2014.

Pausas, J. G. and Keeley, J. E.: Wildfires and global change, *Front. Ecol. Environ.*, 19, 387–395, <https://doi.org/10.1002/fee.2359>, 2021.

Pereira, G., Siqueira, R., Rosário, N. E., Longo, K. L., Freitas, S. R., Cardozo, F. S., Kaiser, J. W., and Wooster, M. J.: Assessment of fire emission inventories during the South American Biomass Burning Analysis (SAMBBA) experiment, *Atmos. Chem. Phys.*, 16, 6961–6975, <https://doi.org/10.5194/acp-16-6961-2016>, 2016.  
 705

Pfister, G. G., Avise, J., Wiedinmyer, C., Edwards, D. P., Emmons, L. K., Diskin, G. D., Podolske, J., and Wisthaler, A.: CO source contribution analysis for California during ARCTAS-CARB, *Atmos. Chem. Phys.*, 11, 7515–7532, <https://doi.org/10.5194/acp-11-7515-2011>, 2011.



- 710 Pimonsree, S. and Vongruang, P.: Impact of biomass burning and its control on particulate matter over a city in mainland Southeast Asia during a smog episode, *Atmospheric Environment*, 195, 196–209, <https://doi.org/10.1016/j.atmosenv.2018.09.053>, 2018.
- Pouliot, G., Rao, V., McCarty, J. L., and Soja, A.: Development of the crop residue and rangeland burning in the 2014 National Emissions Inventory using information from multiple sources, *Journal of the Air & Waste Management Association*, 67, 613–622, <https://doi.org/10.1080/10962247.2016.1268982>, 2017.
- 715 Reddington, C. L., Morgan, W. T., Darbyshire, E., Brito, J., Coe, H., Artaxo, P., Scott, C. E., Marsham, J., and Spracklen, D. V.: Biomass burning aerosol over the Amazon: analysis of aircraft, surface and satellite observations using a global aerosol model, *Atmos. Chem. Phys.*, 19, 9125–9152, <https://doi.org/10.5194/acp-19-9125-2019>, 2019.
- 720 Reid, C. E., Brauer, M., Johnston, F. H., Jerrett, M., Balmes, J. R., and Elliott, C. T.: Critical Review of Health Impacts of Wildfire Smoke Exposure, *Environ Health Perspect*, 124, 1334–1343, <https://doi.org/10.1289/ehp.1409277>, 2016.
- Santiago-De La Rosa, N., González-Cardoso, G., Figueroa-Lara, J. de J., Gutiérrez-Arzaluz, M., Octaviano-Villasana, C., Ramírez-Hernández, I. F., and Mugica-Álvarez, V.: Emission factors of atmospheric and climatic pollutants from crop residues burning, *Journal of the Air & Waste Management Association*, 68, 849–865, <https://doi.org/10.1080/10962247.2018.1459326>, 2018.
- 725 Schoennagel, T., Balch, J. K., Brenkert-Smith, H., Dennison, P. E., Harvey, B. J., Krawchuk, M. A., Mietkiewicz, N., Morgan, P., Moritz, M. A., Rasker, R., Turner, M. G., and Whitlock, C.: Adapt to more wildfire in western North American forests as climate changes, *Proc. Natl. Acad. Sci. U.S.A.*, 114, 4582–4590, <https://doi.org/10.1073/pnas.1617464114>, 2017.
- Schroeder, W., Oliva, P., Giglio, L., and Csiszar, I. A.: The New VIIRS 375 m active fire detection data product: Algorithm description and initial assessment, *Remote Sensing of Environment*, 143, 85–96, <https://doi.org/10.1016/j.rse.2013.12.008>, 2014.
- 735 Seiler, W. and Crutzen, P. J.: Estimates of gross and net fluxes of carbon between the biosphere and the atmosphere from biomass burning, *Climate Change*, 2, 207–247, 1980.
- Shen, L., Jacob, D. J., Zhu, L., Zhang, Q., Zheng, B., Sulprizio, M. P., Li, K., De Smedt, I., González Abad, G., Cao, H., Fu, T., and Liao, H.: The 2005–2016 Trends of Formaldehyde Columns Over China Observed by Satellites: Increasing Anthropogenic Emissions of Volatile Organic Compounds and Decreasing Agricultural Fire Emissions, *Geophysical Research Letters*, 46, 4468–4475, <https://doi.org/10.1029/2019GL082172>, 2019.
- 740 Soares, J., Sofiev, M., and Hakkarainen, J.: Uncertainties of wild-land fires emission in AQMEII phase 2 case study, *Atmospheric Environment*, 115, 361–370, <https://doi.org/10.1016/j.atmosenv.2015.01.068>, 2015.



- 745 Stavrakou, T., Müller, J.-F., Bauwens, M., De Smedt, I., Lerot, C., Van Roozendaal, M., Coheur, P.-F., Clerbaux, C., Boersma, K. F., van der A, R., and Song, Y.: Substantial Underestimation of Post-Harvest Burning Emissions in the North China Plain Revealed by Multi-Species Space Observations, *Sci Rep*, 6, 32307, <https://doi.org/10.1038/srep32307>, 2016.
- 750 Stockwell, C. E., Veres, P. R., Williams, J., and Yokelson, R. J.: Characterization of biomass burning emissions from cooking fires, peat, crop residue, and other fuels with high-resolution proton-transfer-reaction time-of-flight mass spectrometry, *Atmos. Chem. Phys.*, 15, 845–865, <https://doi.org/10.5194/acp-15-845-2015>, 2015.
- Takami, K., Shimadera, H., Uranishi, K., and Kondo, A.: Impacts of Biomass Burning Emission Inventories and Atmospheric Reanalyses on Simulated PM<sub>10</sub> over Indochina, *Atmosphere*, 11, 160, <https://doi.org/10.3390/atmos11020160>, 2020.
- 755 Tang, W., Emmons, L. K., Buchholz, R. R., Wiedinmyer, C., Schwantes, R. H., He, C., Kumar, R., Pfister, G. G., Worden, H. M., Hornbrook, R. S., Apel, E. C., Tilmes, S., Gaubert, B., Martinez-Alonso, S., Lacey, F., Holmes, C. D., Diskin, G. S., Bourgeois, I., Peischl, J., Ryerson, T. B., Hair, J. W., Weinheimer, A. J., Montzka, D. D., Tyndall, G. S., and Campos, T. L.: Effects of Fire Diurnal Variation and Plume Rise on U.S. Air Quality During FIREX-AQ and WE-CAN Based on the Multi-Scale Infrastructure for Chemistry and Aerosols (MUSICAv0), *JGR Atmospheres*, 127, <https://doi.org/10.1029/2022JD036650>, 2022.
- 760 Urbanski, S.: Wildland fire emissions, carbon, and climate: Emission factors, *Forest Ecology and Management*, 317, 51–60, <https://doi.org/10.1016/j.foreco.2013.05.045>, 2014.
- Urbanski, S. P., Hao, W. M., and Nordgren, B.: The wildland fire emission inventory: western United States emission estimates and an evaluation of uncertainty, *Atmos. Chem. Phys.*, 11, 12973–13000, <https://doi.org/10.5194/acp-11-12973-2011>, 2011.
- 765 Urbanski, S. P., Reeves, M. C., Corley, R. E., Silverstein, R. P., and Hao, W. M.: Contiguous United States wildland fire emission estimates during 2003–2015, *Earth Syst. Sci. Data*, 10, 2241–2274, <https://doi.org/10.5194/essd-10-2241-2018>, 2018.
- 770 Val Martin, M., Heald, C. L., Lamarque, J.-F., Tilmes, S., Emmons, L. K., and Schichtel, B. A.: How emissions, climate, and land use change will impact mid-century air quality over the United States: a focus on effects at national parks, *Atmos. Chem. Phys.*, 15, 2805–2823, <https://doi.org/10.5194/acp-15-2805-2015>, 2015.
- 775 van der Werf, G. R., Randerson, J. T., Giglio, L., van Leeuwen, T. T., Chen, Y., Rogers, B. M., Mu, M., van Marle, M. J. E., Morton, D. C., Collatz, G. J., Yokelson, R. J., and Kasibhatla, P. S.: Global fire emissions estimates during 1997–2016, *Earth Syst. Sci. Data*, 9, 697–720, <https://doi.org/10.5194/essd-9-697-2017>, 2017.



Wiedinmyer, C. and Emmons, L.: Fire Inventory from NCAR version 2 Fire Emission, <https://doi.org/10.5065/XNPA-AF09>, 2022.

780 Wiedinmyer, C., Akagi, S. K., Yokelson, R. J., Emmons, L. K., Al-Saadi, J. A., Orlando, J. J., and Soja, A. J.: The Fire INventory from NCAR (FINN): A high resolution global model to estimate the emissions from open burning, *Geoscientific Model Development*, 4, 625, 2011.

Xu, L., Crounse, J. D., Vasquez, K. T., Allen, H., Wennberg, P. O., Bourgeois, I., Brown, S. S., Campuzano-Jost, P., Coggon, M. M., Crawford, J. H., DiGangi, J. P., Diskin, G. S., Fried, A., Gargulinski, E. M., Gilman, J. B., Gkatzelis, G. I., Guo, H., Hair, J. W., Hall, S. R., Halliday, H. A., Hanisco, T. F., Hannun, R. A., Holmes, C. D., Huey, L. G., Jimenez, J. L., Lamplugh, A., Lee, Y. R., Liao, J., Lindaas, J., Neuman, J. A., Nowak, J. B., Peischl, J., Peterson, D. A., Piel, F., Richter, D., Rickly, P. S., Robinson, M. A., Rollins, A. W., Ryerson, T. B., Sekimoto, K., Selimovic, V., Shingler, T., Soja, A. J., St. Clair, J. M., Tanner, D. J., Ullmann, K., Veres, P. R., Walega, J., Warneke, C., Washenfelter, R. A., Weibring, P., Wisthaler, A., Wolfe, G. M., Womack, C. C., and Yokelson, R. J.: Ozone chemistry in western U.S. wildfire plumes, *Sci. Adv.*, 7, eabl3648, <https://doi.org/10.1126/sciadv.abl3648>, 2021.

Xu, Q., Westerling, A. L., Notohamiprodjo, A., Wiedinmyer, C., Picotte, J. J., Parks, S. A., Hurteau, M. D., Marlier, M. E., Kolden, C. A., Sam, J. A., Baldwin, W. J., and Ade, C.: Wildfire burn severity and emissions inventory: an example implementation over California, *Environ. Res. Lett.*, 17, 085008, <https://doi.org/10.1088/1748-9326/ac80d0>, 2022.

795 Xu, R., Yu, P., Abramson, M. J., Johnston, F. H., Samet, J. M., Bell, M. L., Haines, A., Ebi, K. L., Li, S., and Guo, Y.: Wildfires, Global Climate Change, and Human Health, *N Engl J Med*, 383, 2173–2181, <https://doi.org/10.1056/NEJMSr2028985>, 2020.